

Inverter Maintenance Communication Application

PCM002Z

Instruction Manual

TOSHIBA INDUSTRIAL PRODUCTS AND SYSTEMS CORPORATION

Technical information described in this document is used to explain typical operations and applications of products, and this is not intended to grant warranty or licensing right on its use regarding TOSHIBA group or a third party intellectual property and other right.

- Contents -

| | |
|--|----|
| 1. Introduction | 3 |
| 2. Installation procedure | 5 |
| 2.1. Installation..... | 5 |
| 2.1.1. Drive data installed by "Typical" | 7 |
| 2.1.2. Selection of installed drive data | 8 |
| 2.1.3. Patch file for Version up or Addition of Drive data | 10 |
| 2.2. Uninstall (Windows 7 or 8)..... | 11 |
| 3. Menu description | 12 |
| 3.1. File | 14 |
| 3.1.1. New..... | 14 |
| 3.1.2. Open | 15 |
| 3.1.3. Save..... | 17 |
| 3.1.4. Save As..... | 17 |
| 3.1.5. Page Setup | 19 |
| 3.1.6. Print | 20 |
| 3.1.7. Communication Setup | 21 |
| 3.1.8. Exit..... | 22 |
| 3.2. Parameter | 23 |
| 3.2.1. Parameter Table | 24 |
| 3.2.2. Undo / Redo..... | 25 |
| 3.2.3. Copy | 25 |
| 3.2.4. Parameter Import / Parameter Export | 25 |
| 3.2.5. Selected Parameter Import / Export | 26 |
| 3.2.6. Parameter Comparison..... | 27 |
| 3.2.7. Parameter Comparison with File | 28 |
| 3.2.8. 'Changed' Only | 28 |
| 3.2.9. Ampere/Volt | 28 |
| 3.2.10. Select / Select Clear | 29 |
| 3.2.11. Blind | 29 |
| 3.2.12. All Parameters | 30 |
| 3.2.13. Hex. / Dec. | 30 |
| 3.2.14. Shipment..... | 30 |
| 3.2.15. Find..... | 31 |
| 3.2.16. Parameter Information | 31 |
| 3.2.17. Other functions | 32 |
| 3.2.18. Precautions when exporting | 33 |
| 3.2.19. AUL/F519..... | 34 |
| 3.3. Key Pad | 36 |
| 3.4. Monitoring | 37 |
| 3.4.1. Inverter Info..... | 37 |
| 3.4.2. Monitoring | 38 |
| 3.4.2.1. Open/Save as..... | 42 |
| 3.4.2.2. Print | 43 |
| 3.4.2.3. Use level trigger..... | 44 |
| 3.4.2.4. Continuous Monitoring..... | 45 |
| 3.5. Tools | 46 |
| 3.5.1. Environment Options | 46 |
| 3.5.1.1. Startup/Comm..... | 46 |
| 3.5.1.2. File/Parameter | 49 |
| 3.5.1.3. Key Pad/Monitor | 51 |
| 3.5.2. Add / Remove type | 55 |
| 3.5.3. Maintenance mode | 55 |
| 3.5.4. Related PC tool (PCL00xZ, PCT00xZ)..... | 56 |

| | |
|--|----|
| 3.6. Help | 57 |
| 3.6.1. Help | 57 |
| 3.6.2. About PCM002Z | 57 |
| 4. Standard specification | 58 |
| 5. Using example | 60 |
| 5.1. Parameter back-up operation | 60 |
| 5.2. Inverter / Control board replacement operation..... | 61 |

1. Introduction

“PCM002Z” is an application software for MS-Windows that has the following functions so that parameter setting and setting data can be simplified and stored by connecting an inverter with a personal computer (PC) by using USB or RS-485. Carefully read this manual together with the Inverter Instruction manual for correct use.

- Parameter off-line setting
- Write the parameters saved in the PC to an inverter
- Read inverter parameters and save them in the PC
- Check changed parameters
- Print the parameter table
- Operation panel
- Display the inverter information
- Graphical display of status monitors

* For the “PCM002Z” support inverter and CPU versions, refer to the *Help | About PCM002Z* in the menu of this application.

* This document is mentioned for “PCM002Z V1.05”. Some of the screen and the function are different in the model before this version.

Performance environment

| | | |
|---------------|-------|---|
| CPU | | Intel™ Pentium®-1GHz or more |
| OS | | Verified with Microsoft® Windows® 7 (32/64bit) Windows® 8 (32/64bit) |
| Memory | | 1GB or more |
| HDD | | Space area About 16GB |
| Display | | 640 x 480 dot / 256 colors or more |
| Communication | USB | When use USB-Serial Converter is used, a USB cable and RJ45 connector cable are needed. |
| | RS485 | When use RS485 port, RJ45 connector cable is needed. |
| | RS232 | RS232 / 485 converter is used, 2 lines type communication cannot be performed. |
| Others | | Equipped with a CD-ROM drive or internet, a serial ports and a mouse |

It is recommended to use a pointing device such as a mouse in operation.

- * When USB-Serial Converter is used, start the PCM002Z while the converter is connected.
Please do not pull the converter out, and do not insert it during execution of the PCM002Z.
- * Do not change the number of PC's COM port when PCM002Z is active.
- * When a RS232 / 485 converter is used, 2 lines type communication cannot be performed.

- * Specifications for this software may change without prior notice.
- * We shall not be liable for any direct and indirect damages that are caused by use or disability to use of this software product.
- * Pentium is the registered trademark of Intel Corporation in U.S.A
- * Windows® is listed above as the abbreviation for a Microsoft® Windows® operating system. Microsoft®, Windows®, Windows® 7, Windows® 8 and Microsoft® Excel® are registered trademarks or trademarks of the US Microsoft Corporation in the USA and other countries.

Symbols used in this text have the following meaning.

- “ ”: Items and messages of the PCM002Z
- []: Buttons on the screen of the PCM002Z
- Italic*: Menus of the PCM002Z and Windows
- : Keys of the PC

2. Installation procedure

- If other applications are working, end their operation.
- If you update a version of the PCM002Z, uninstall* the older version.
(The version of PCM002Z can be checked with *Help | About PCM002Z* (Section 3.6.2).)

* When the message "**Do you want to allow the following program from an unknown publisher to make changes to this computer?**" is displayed, click [Yes].

* When uninstalling, use *My Computer | Control Panel | Add / Remove Programs*. If user data (initial file PCM002Z.ini, cache file of help file (*.gid), and skip parameter file, etc.) are remained, delete them using the *Windows Explorer*.

2.1. Installation

- ① Copy and save "PCM002Z-W_Vxxx.msi" (Vxxx is software version.) and "Data.cab" files to PC from CD-ROM or Web-site. Please do not delete these files after installation. "Add / Remove model" function of PCM002Z uses these files.
- ② When "PCM002Z-W_Vxxx.msi" is executed, the following window is displayed. Please click [Next] button. (Please execute "PCM002Z-W_Vxxx.msi" as Administrator or higher level access privileges.)

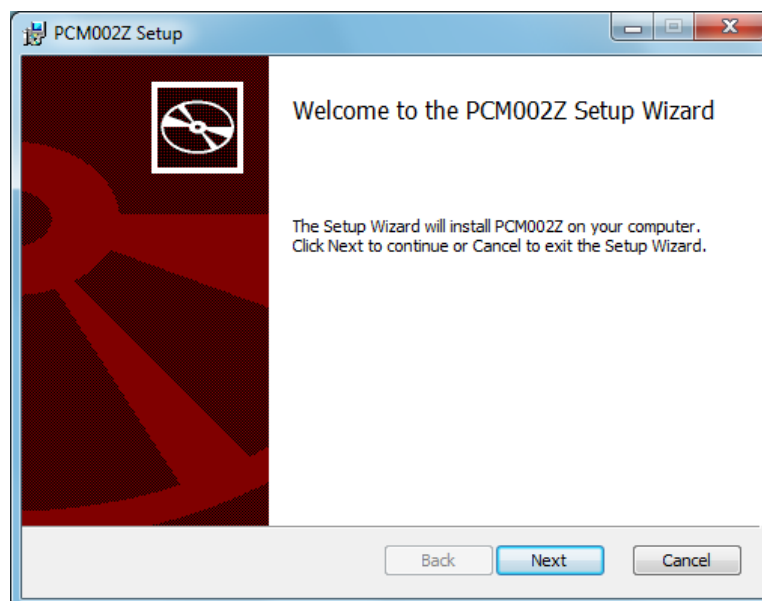


Figure 2-1 Installation Window

③ Please input the user-name etc. and click [Next] button.

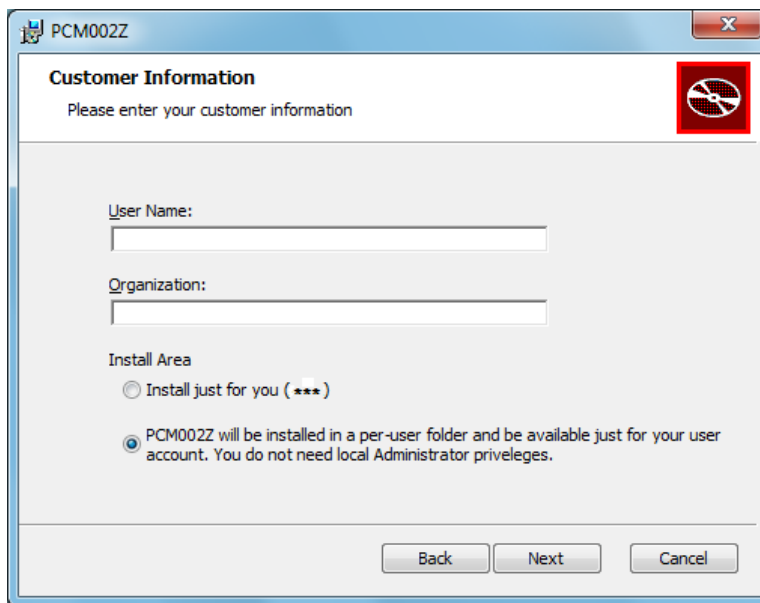


Figure 2-2 Installation Window (Customer Information)

④ The standard installation destination* of PCM002Z is C:\Program Files\PCM002Z-W\.
Please select [Change] button clicking when you change the installation destination.

* The destination on 64bit Windows7 or 8: C:\Program Files (x86)\PCM002Z-W\.

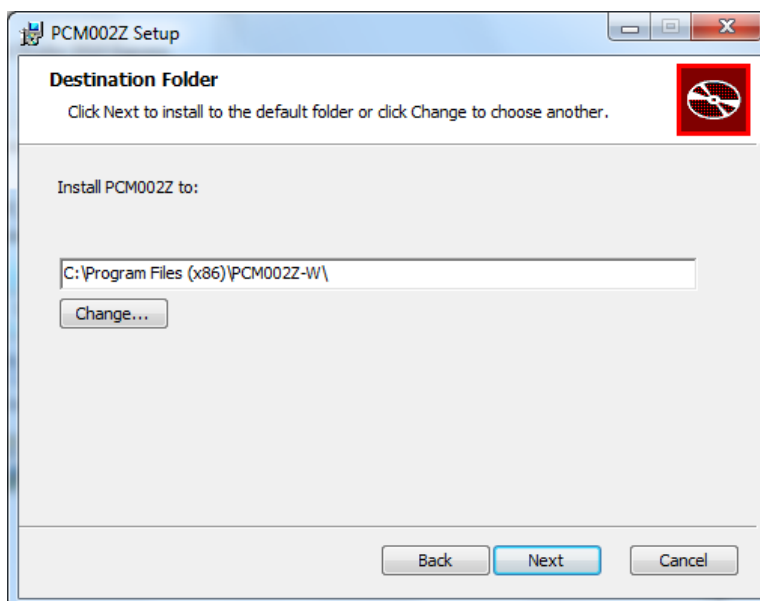


Figure 2-3 Installation Window (Destination Folder)

⑤ Please restart Windows.

2.1.1. Drive data installed by "Typical"

Later drive data is installed when "Typical" is selected, and it is possible to select on PCM002Z start-up window.

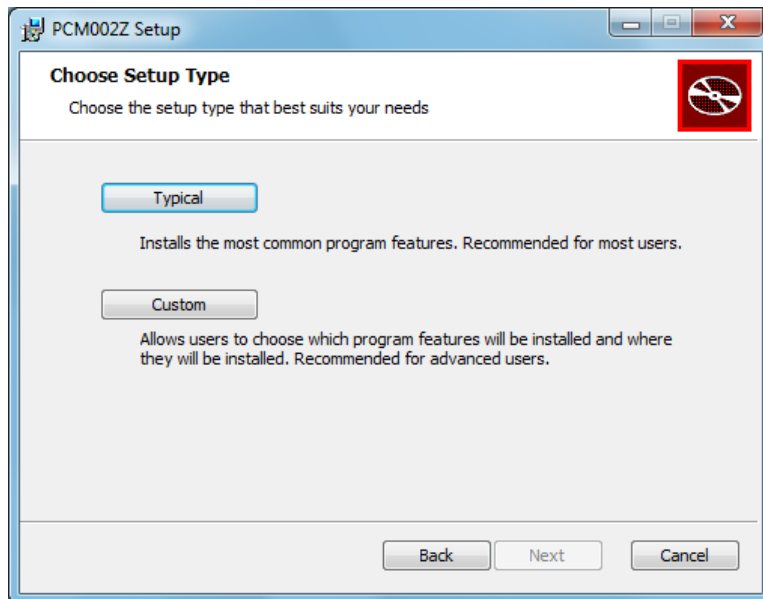


Figure 2-4 Installation Window (Setup Type selection)

* After installation, the drive data can be added and be deleted. Refer to the section 3.5.2.

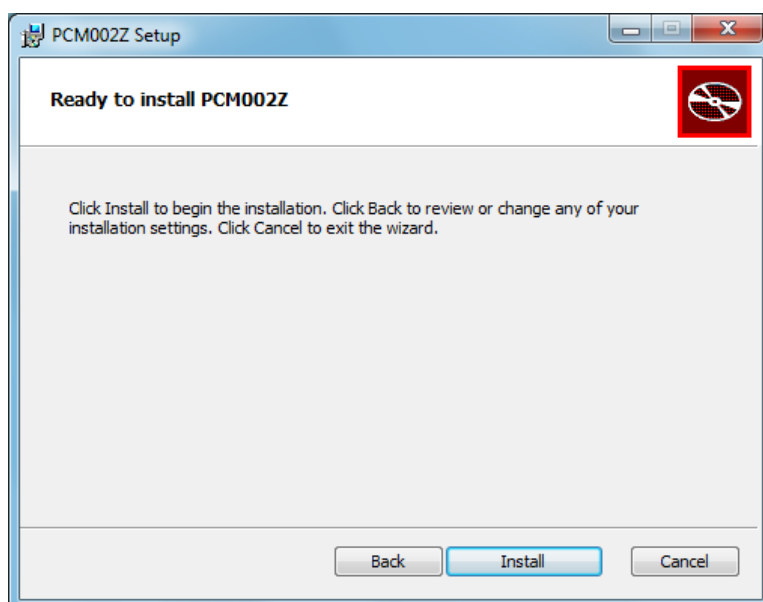
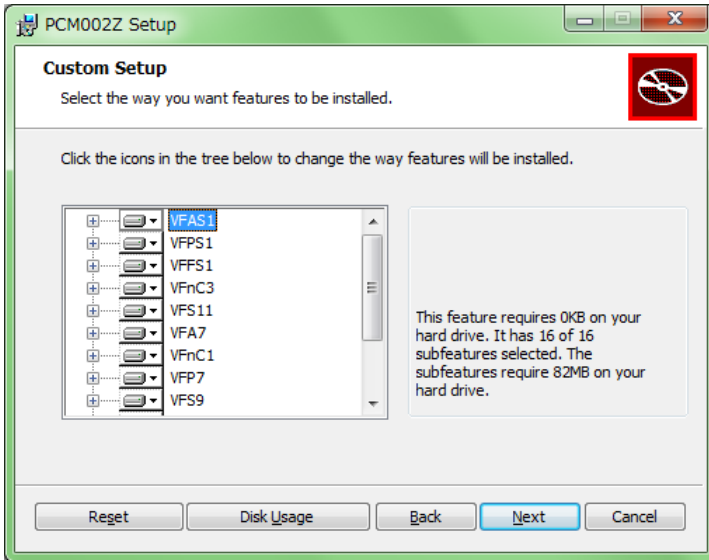


Figure 2-5 Installation Window (Install start confirmation)

2.1.2. Selection of installed drive data

The following window is displayed when "Custom" is selected and the installed drive data can be selected.

* The unselected drive data cannot be shown on PCM002Z start-up window.



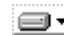


-  : All versions have been selected.
-  : A part of version has been selected.
-  : All versions have not been selected.

Figure 2-6 Installation Window (Drive data selection)

Selection example 1) Using "VFPS1(V614)"

1. Click "VFPS1".
2. Click ▼ on "VFPS1(V614)" button.

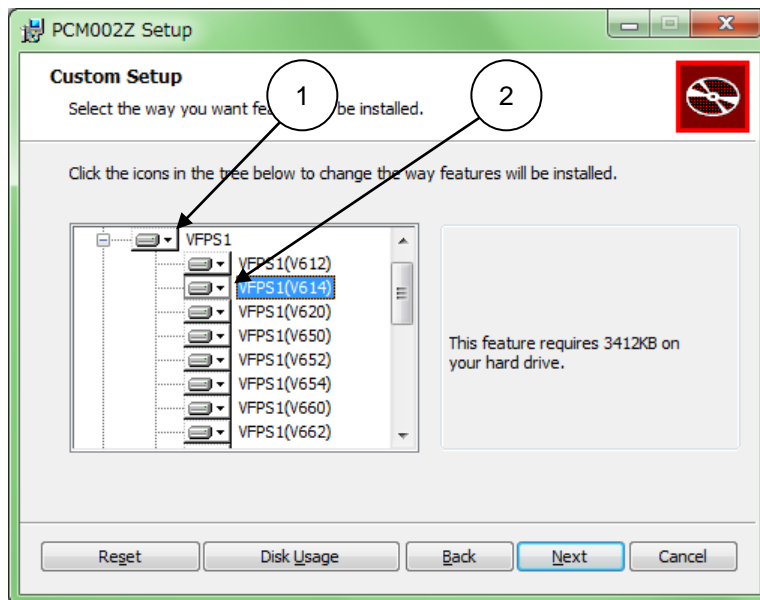


Figure 2-7 Installation Window (Drive data selection)

3. The figure below is displayed. Select "Will be installed on local hard drive".

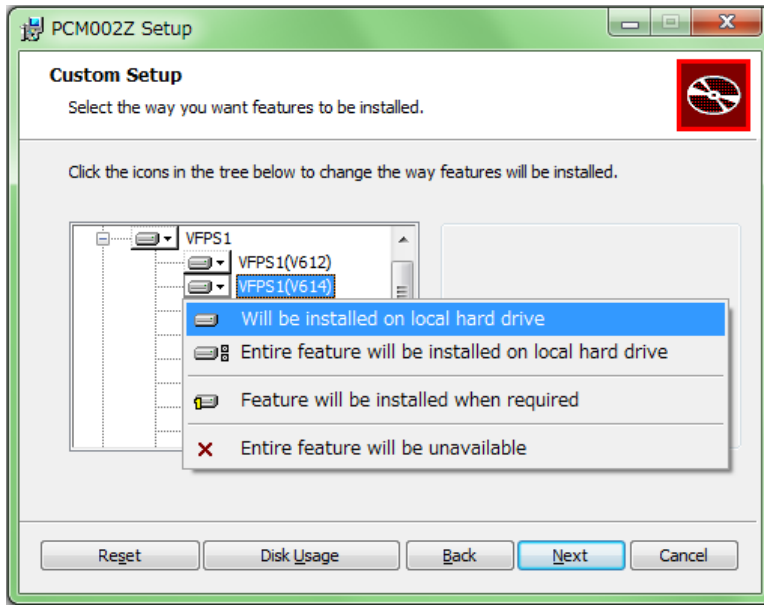


Figure 2-8 Installation Window (Drive data selection)

Selection example 2) Using all CPU version of "VFPS1"

1. Click ▼ on "VFPS1" button.
2. The figure below is displayed. Select "Entire feature will be installed on local hard drive".

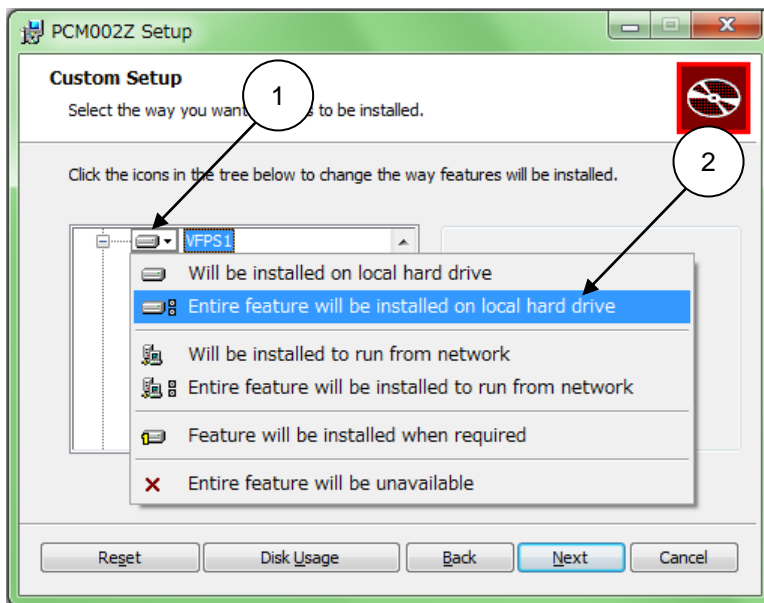


Figure 2-9 Installation Window (Drive data selection)

2.1.3. Patch file for Version up or Addition of Drive data

Installed PCM002Z (installed by Standard installer or added Drive data or Version up by standard Patch file) can be updated by Patch file.

Copy Patch files to PC, and execute PCM002Z-J_Vxxx_Patch.bat (Vxxx is adaptive PCM002Z version.) as Administrator or higher level access privileges.

Patch file name PCM002Z-J_Vxxx_Patch.bat
 PCM002Z-J_Vxxx_Patch.msp

Note: The patch file can update only the corresponding version. Please confirm Installed PCM002Z version and adaptive patch file.

2.2. Uninstall (Windows 7 or 8)

Select *Control panel* | *Uninstall a Program* from the start menu of Windows.

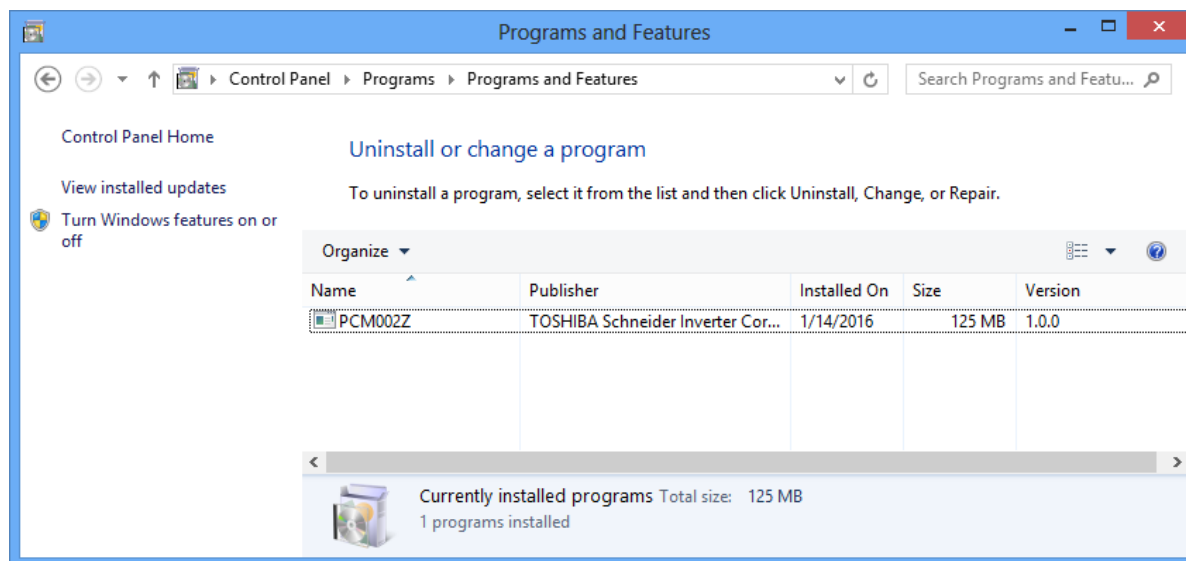


Figure 2-10 *Programs and Features* Window (Windows 8)

Select "PCM002Z" and click [Uninstall].

* Even if select "PCM002Z" and click "Uninstall" from the pop-up menu displayed by right-clicking, it is the same.

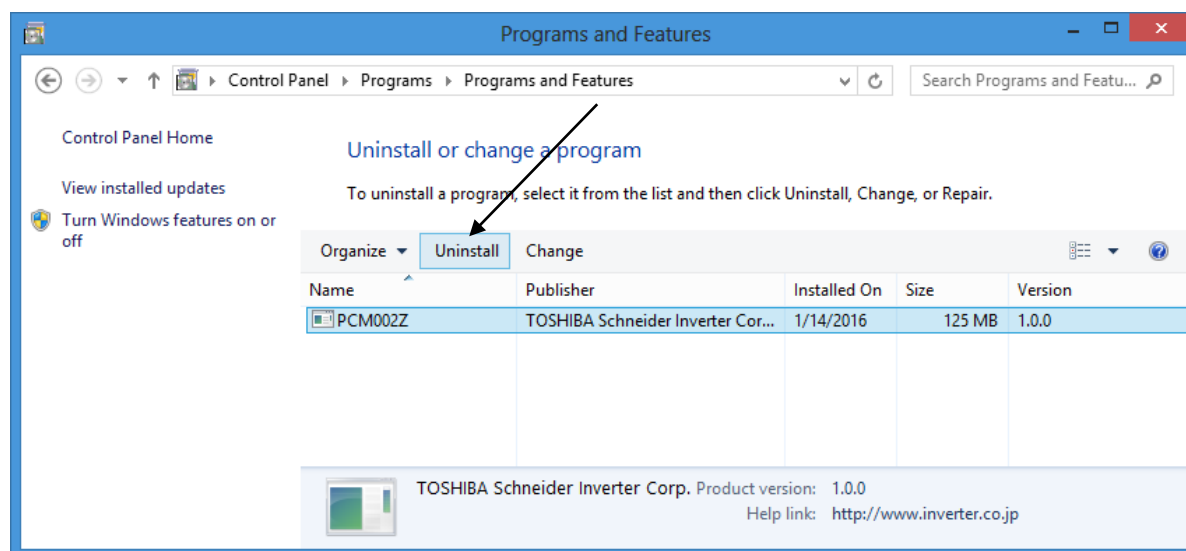


Figure 2-11 *Uninstall or change a program* Window (Windows 8)

3. Menu description

Each setting menu is described here.

Starting of PCM002Z displays the selection screen of a language, a inverter type-form, and a CPU version to be used. As for the language, "**Japanese**" is displayed at the first execution after installation, and as for the inverter type-form, "**VFAS1-2004P**" is displayed. Please choose the language, the inverter type-form and the CPU version from a down-list, and push the **[OK]** button.

* The inverter type-form can be made to recognize automatically when it can communicate at the starting. (Related article *Environment Options* (Section 3.5.1.)) However, depending on a communication port of the PC setup and the inverter type-form and the CPU version, even when it can communicate, recognition may be impossible.



If you select the drive different from the connected drive, the parameters on the PCM002Z differ from those on the inverter. In this case, the errors will occur at communication.



Figure 3-1 Startup screen

When the language, the drive and the CPU version are selected and the **[OK]** button is pressed, the main menu and *Parameter Table* are displayed.

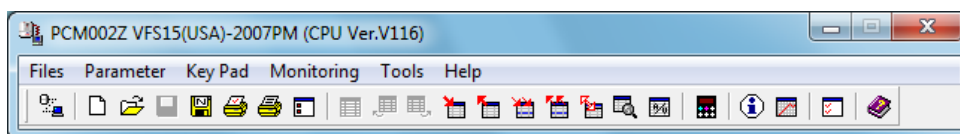


Figure 3-2 Main Menu screen

At Start up, some menu and buttons required for communication are displayed as enable. When the check box, *Tools / Environment Option / Display last selected Inverter*, is with no check (check the connected drive type at start up) or when some menu and buttons required for communication are failed to communicate with the drive, those menu and buttons color are changed to be disable color (gray). As a result of execution of *Communication Setup / Check the configuration of the drive* or *Communication check* button, if communication is available, menu and buttons are change to be enable.

Tool bars



: Check communication each time when this button is pressed (the communication is possible).



*: When communication is impossible.



: Communicating.



: Execute *File* | *New*. (Refer to Section 3.1.1.)



: Execute *File* | *Open*. (Refer to Section 3.1.2.)



: Execute *File* | *Save*. (Refer to Section 3.1.3.)



: Execute *File* | *Save As*. (Refer to Section 3.1.4.)



: Execute *File* | *Page Setup*. (Refer to Section 3.1.5.)



: Execute *File* | *Print*. (Refer to Section 3.1.6.)



: Start *File* | *Communication Setup*. (Refer to Section 3.1.7.)



: Execute *Parameter* | *Parameter Table*. (Refer to Section 3.2.1.)



: Execute *Parameter* | *Undo*. (Refer to Section 3.2.2.)



: Execute *Parameter* | *Redo*. (Refer to Section 3.2.2.)



: Execute *Parameter* | *Parameter Import*. (Refer to Section 3.2.4.)



: Execute *Parameter* | *Parameter Export*. (Refer to Section 3.2.4.)



: Execute *Parameter* | *Selected Parameter Import*. (Refer to Section 3.2.5.)



: Execute *Parameter* | *Selected Parameter Export*. (Refer to Section 3.2.5.)



: Execute *Parameter* | *Parameter Comparison*. (Refer to Section 3.2.6.)



: Execute *Parameter* | *Find*. (Refer to Section 3.2.15.)



: Execute *Parameter* | *Ampere/Volt*. (Refer to Section 3.2.9.)



: Start *Key Pad*. (Refer to Section 3.3.)



: Execute *Monitoring* | *Inverter Info.*. (Refer to Section 3.4.1.)



: Execute *Monitoring* | *Monitor*. (Refer to Section 3.4.2.)



: Execute *Tools* | *Environment Options*. (Refer to Section 3.5.1.)



: Display *Help*. (Refer to Section 3.6.1.)

* Blank (gray) display means unavailable.

3.1. File

File operations and print are executed.

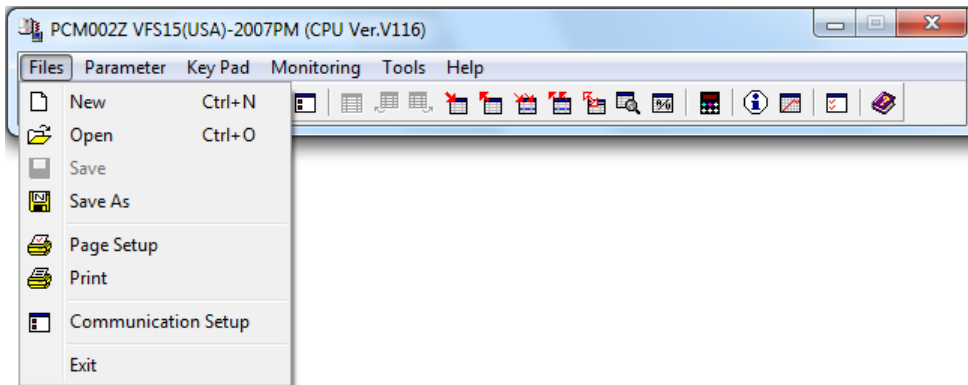


Figure 3-3 *File* menu screen

3.1.1. New

The present parameter setting is discarded, and parameter setting files are newly created. The selection of the inverter type starts again. Menu and Message Language are only changed when PCM002Z starts. The selected inverter type is displayed on the title bar of the main menu.

3.1.2. Open

Open "**PCM002Z Parameter Data (*.pcm)**" file or "**PWU003Z Parameter Data (*.cfg)**" file*. (Also can open PCM001Z file)

A dialog box to select files is displayed. Then specify a file name and press the [**Open**] button. The name of the file is displayed on the title bar of the main menu.

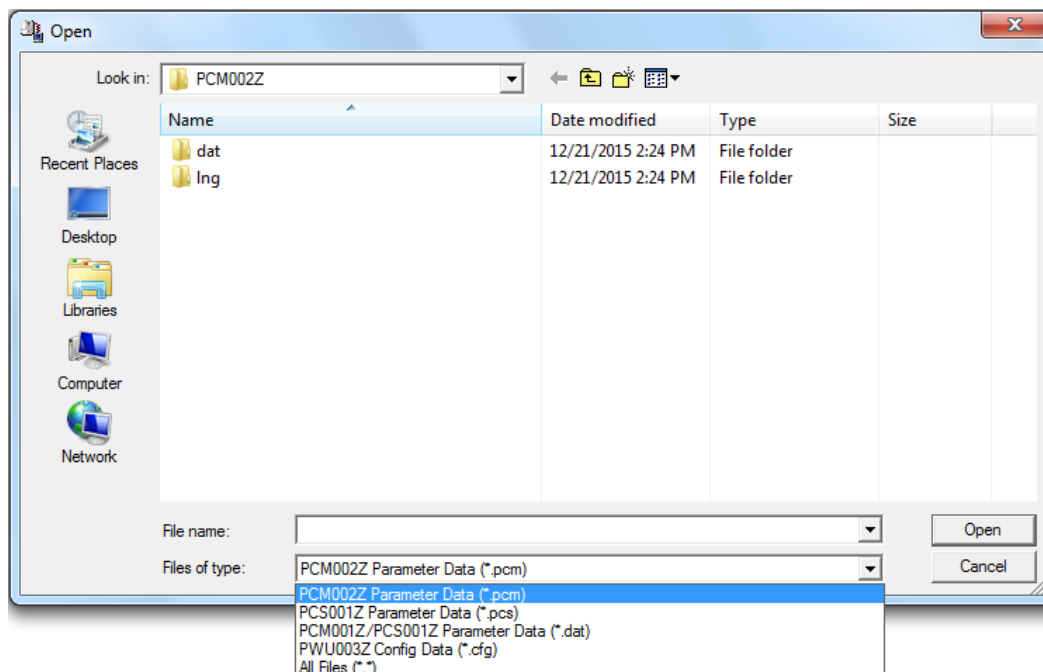


Figure 3-4 File | Open menu screen

* Only when the inverter, that PWU003Z corresponds, has been selected, "**PWU003Z Parameter Data (*.cfg)**" is displayed.

* When select "**PCL001Z Parameter Data (*.pcl)**", select "**File of type**" to "**All Files (*.*)**".

When the file saved for a different inverter type is chosen, the following message is displayed.

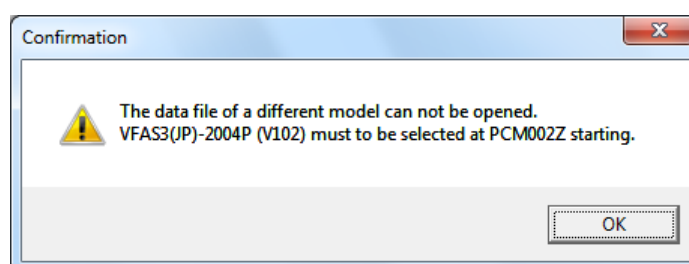


Figure 3-5 File | Open error message screen

When the file saved for a different inverter capacity is chosen, the following message is displayed.

When button [No] is clicked, the file is read except the data specific to the inverter type (As for the inverter form parameter data, default data is read).

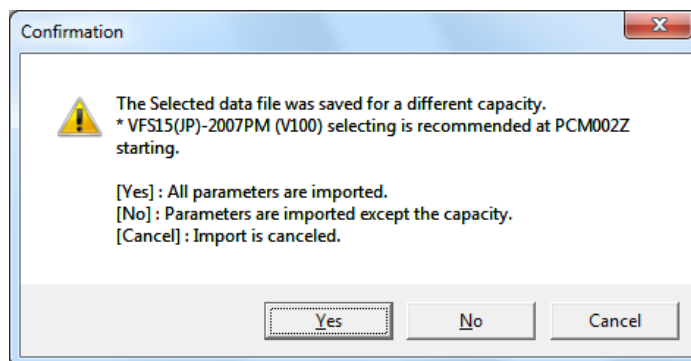


Figure 3-6 File | Open confirmation message screen

When the file saved by a different inverter software (CPU) version is chosen, the following message is displayed (Only *.pcm format file).

When [Cancel] button is clicked, data reading is stopped..

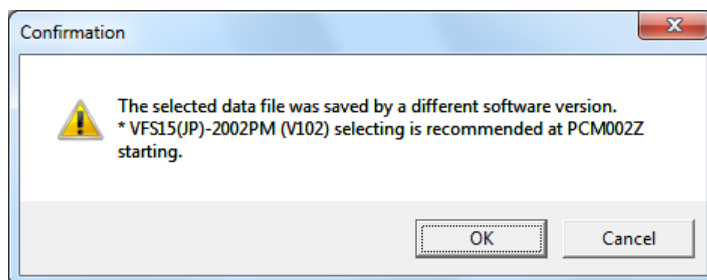


Figure 3-7 File | Open confirmation message screen

When a parameter is missing during opening, the message below is displayed.

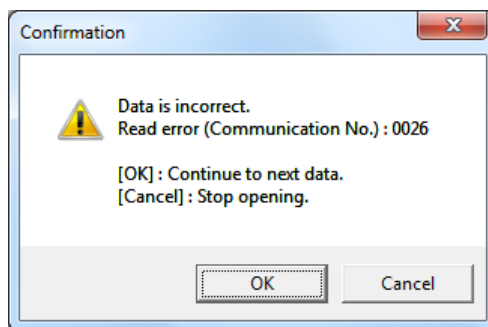


Figure 3-8 File | Open confirmation message screen

3.1.3. Save

The present parameter setting is overwritten in the existing files.

If there is no file to be overwritten, this menu will be a blank display and cannot be selected. "**PCM002Z Parameter Data (*.pcm)**" or "**PWU003Z Parameter Data (*.cfg)**" file only can be overwritten.

3.1.4. Save As

If you select "**PCM002Z Parameter Data (*.pcm)**" or "**PWU003Z Parameter Data (*.cfg)**" file, the present parameter setting will be saved. When the file save dialog is displayed, specify a folder, and save as.

* In the status of default, the parameter settings only displayed as "Changed" in the parameter table are saved. (Related article *Environment Options - File/Parameter* (Section 3.5.1.2.))

* The saved folder as default is the installed folder of PCM002Z.

* Windows Vista or later OS, saved folder is follows.

Windows7, 8 (32bit)

C:\Users\%(User Account Name)\AppData\Local\VirtualStore\Program Files\PCM002Z-W

Windows7, 8 (64bit)

C:\Users\%(User Account Name)\AppData\Local\VirtualStore\ Program Files (x86)\PCM002Z-W

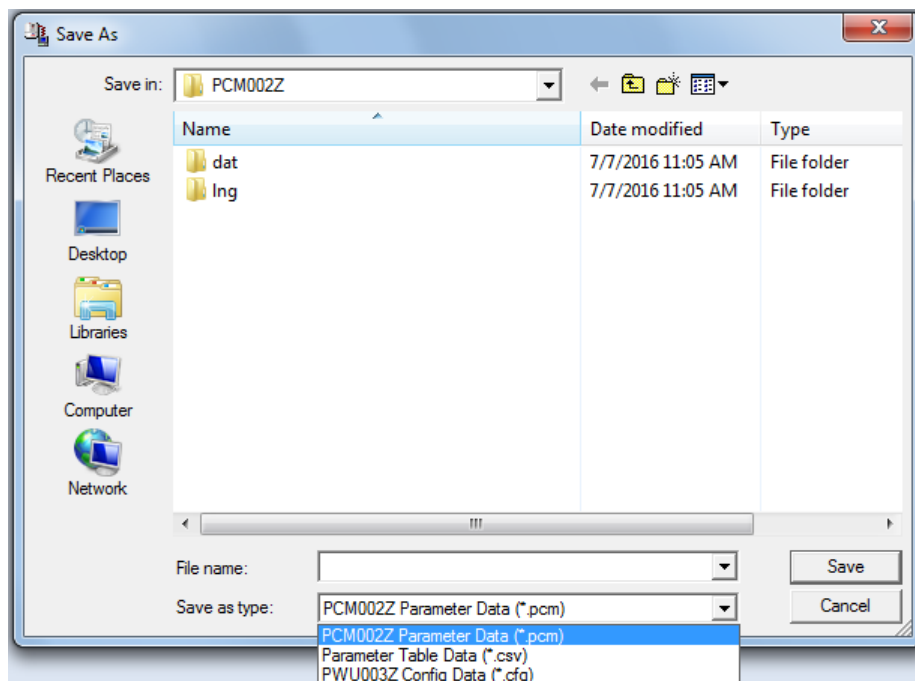


Figure 3-9 File | Save As screen

If you select "**Parameter Table Data (*.csv)**" as the file type, *Parameter Table* will be saved in a csv format.

If you select "**PWU003Z Config Data (*.cfg)**" as the file type, *Parameter Table* will be saved in a cfg format that can be opened by PWU003Z.

- * If you select the "**Parameter Table Data (*.csv)**" on the 'Changed' Only or Blind, the parameters only being displayed are output.
- * The saved file name is displayed on the title bar of the main menu.
- * Only when the drive that corresponds PWU003Z has been selected, "**PWU003Z Parameter Data (*.cfg)**" is displayed.
- * In case of AppData folder missing

Depending on the Windows setting of folders, AppData folder cannot be displayed due to the hidden folder.

If you cannot find the AppData folder, please change the setting of Windows below.

for Windows7

Select *Control panel | Appearance and Personalization | Folder Options* from the start menu of Windows.

Select *View* tab and set *Show hidden files, folders, and drives* under *Hidden files and folders* in the box of *Advanced settings*.

for Windows8

Select *Search | Control panel | Appearance and Personalization | Folder Options* from the charms (Figure 3-10) of Windows.

Select *View* tab and set *Show hidden files, folders, and drives* under *Hidden files and folders* in the box of *Advanced settings*.

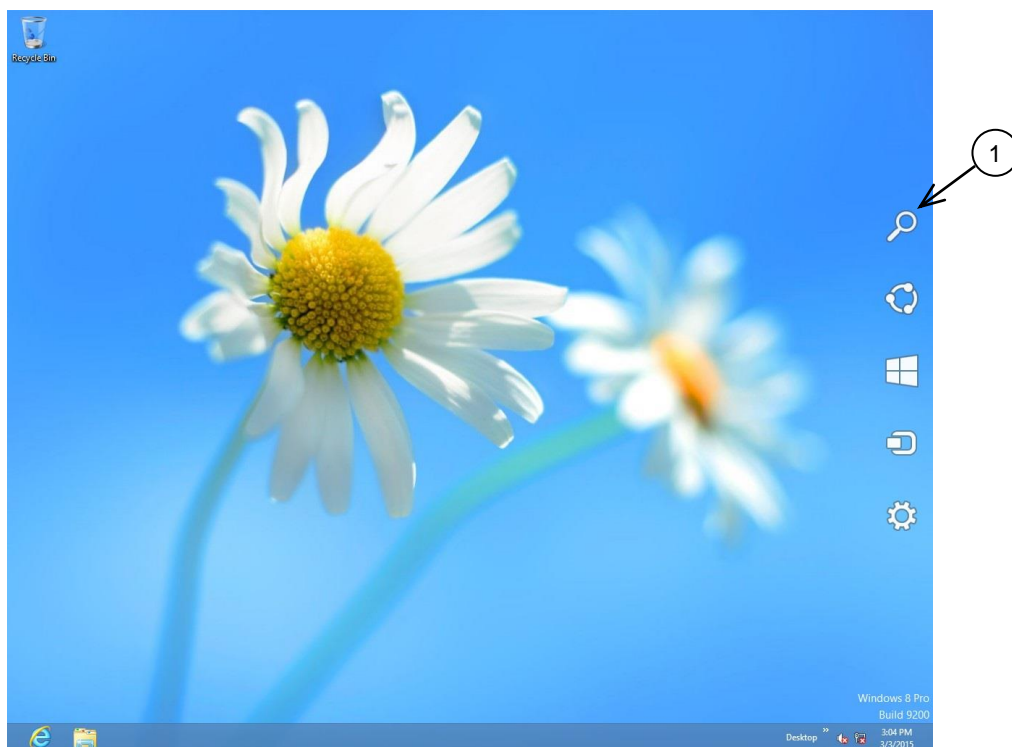


Figure 3-10 Windows8 Charms

3.1.5. Page Setup

When printing the *Parameter Table*, specify the paper size and other items for PCM002Z.

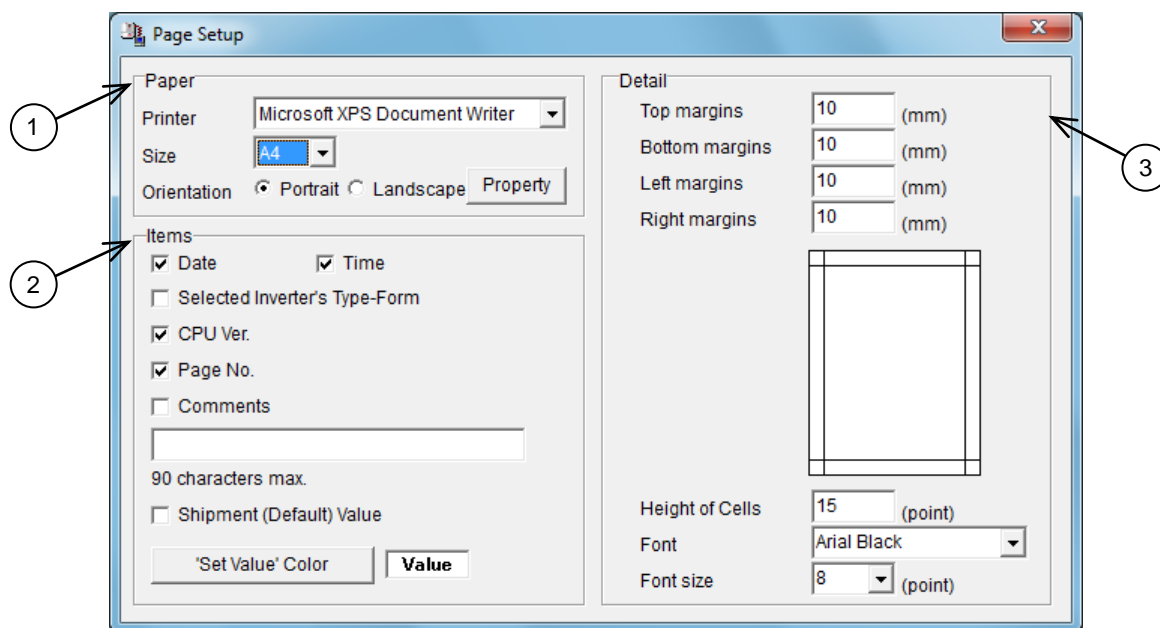


Figure 3-11 File | Page Setup screen

1) Paper

Specify the size of paper to use and orientation. You can select the size from A3, A4, A5, B4 and B5.

2) Items

Select the items to be printed together with the *Parameter Table*. If you check both “Selected inverter’s Type-Form” and “CPU Ver.”, and the inverter has AUL and F519 parameter, AUL and F519 setting are printed.

If you check “**Comments**”, the characters entered in the writing space below will be printed. Comments are 90 character strings. If “**Comments**” is not checked, the comments will be displayed in gray.

If you check “**Shipment Value**”, the factory default value will be added and printed as the “Default” item on the left side of the “Set Val.” column in the *Parameter Table*.

The color of characters of “Set Val.” can be specified by “**Value’ Color**” at printing.

3) Detail

Spaces other than spaces in the *Parameter Table*, with respect to the paper, are specified by “**Margin**”. For example, if you open punch holes in the printed paper, set the left margin to about 20 mm.

* The decimal point cannot be set.

The height of cells of the *Parameter Table* is specified by “**Height of Cells**”. When printing in a sheet of large paper, you can adjust “**Height of Cells**” and “**Font size**” so that print becomes natural.

The style and font size to use for print can be specified by “**Font**” and “**Font size**” (cannot be applied to “**Title**”).

3.1.6. Print

Print the *Parameter Table*. A print image can be checked on the preview screen.

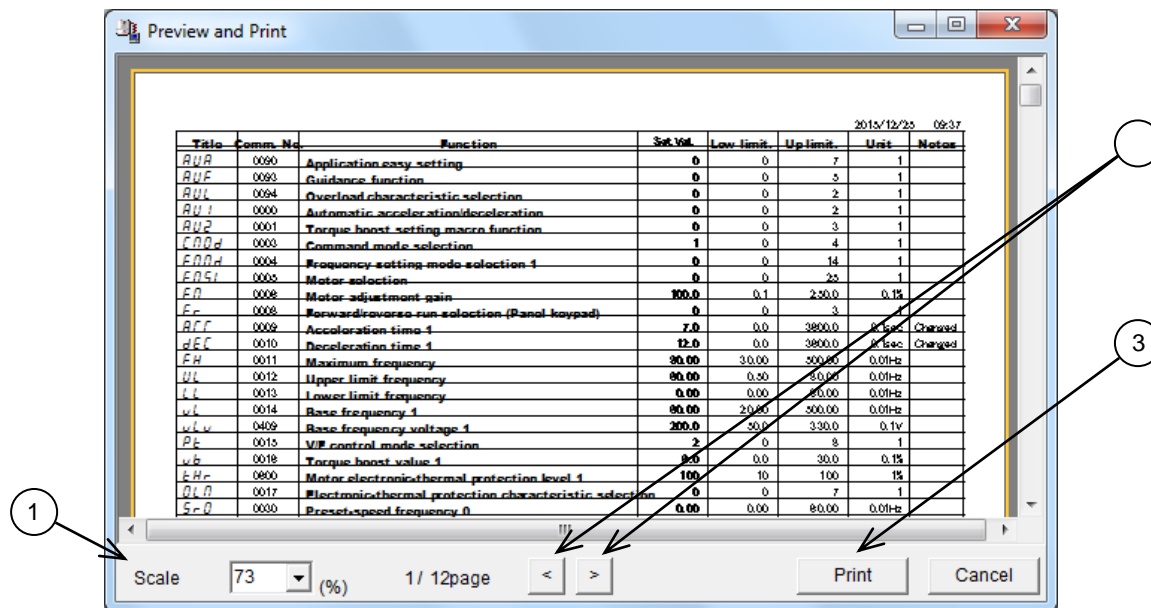


Figure 3-12 File | Print screen

1) Preview Multiplication

The scale factor of the displayed preview is changed.

2) Page Selection

The previous page and the next page can be previewed with the [**<**] and [**>**] buttons, respectively.

3) Print execution

If you click the [**Print**] button, the preview contents will be sent to a printer for print.

* [**Print**] can be selected after preview process is complete.

3.1.7. Communication Setup

The setup of the COM port on the computer side is executed. Set to the communication setting of the inverter you use. Improper setting does not allow the correct data communications.

After setup of *Communication Setup*, if menu related to the communication and buttons are blank indication (gray color), click on *Communication check* button of the tool bar, and renew the status of menu and buttons related to the communication.

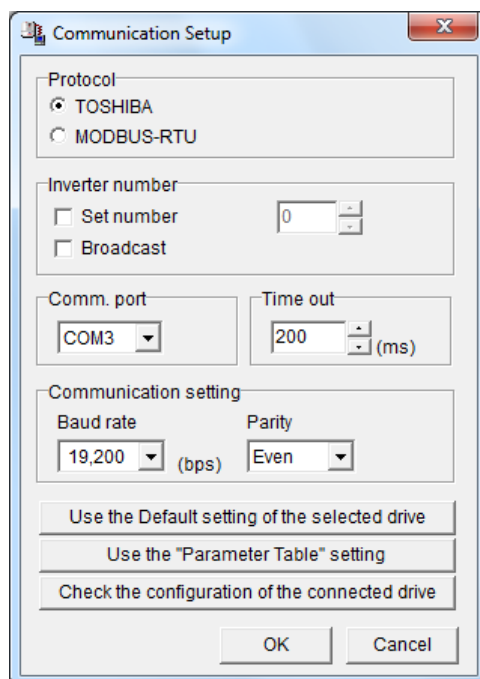


Figure 3-13 File | *Communication Setup* screen

If the baud rate is low, such as 1,200 bps or 2,400 bps, it is necessary to specify “**Time out**” to be longer.

*1 The “**Broadcast**” function does not support communications by group units that use the wild card (*) described in each drive series “RS485 Communications Function Manual”.

*2 When a USB-Serial Converter is used, start the PCM002Z while the converter is connected.

[Use the Default setting of the selected drive]

The communication setting of the selected drive's shipment is displayed in each item of *Communication Setup*.

[Use the "Parameter Table" setting]

The communication setting of the parameter concerning the communication in *Parameter Table* is displayed in each item of *Communication Setup*.

[Check the configuration of the connected drive]

The communication setting for the connected drive is investigated. When the condition that can be communicated is found, they are displayed in each item of *Communication Setup*.

Below table is the checking combination of communication setting.

* The changed item is displayed in blue.

| | Description |
|---------------------|--------------------------------|
| Communication port | COM1~15 |
| Communication Speed | 9,600bps, 19,200bps, 38,400bps |
| Parity | Even, Odd, None |
| Protocol | TOSHIBA, MODBUS-RTU |

3.1.8. Exit

Close this application.

3.2. Parameter

Parameter setting, Import, and Export are executed.

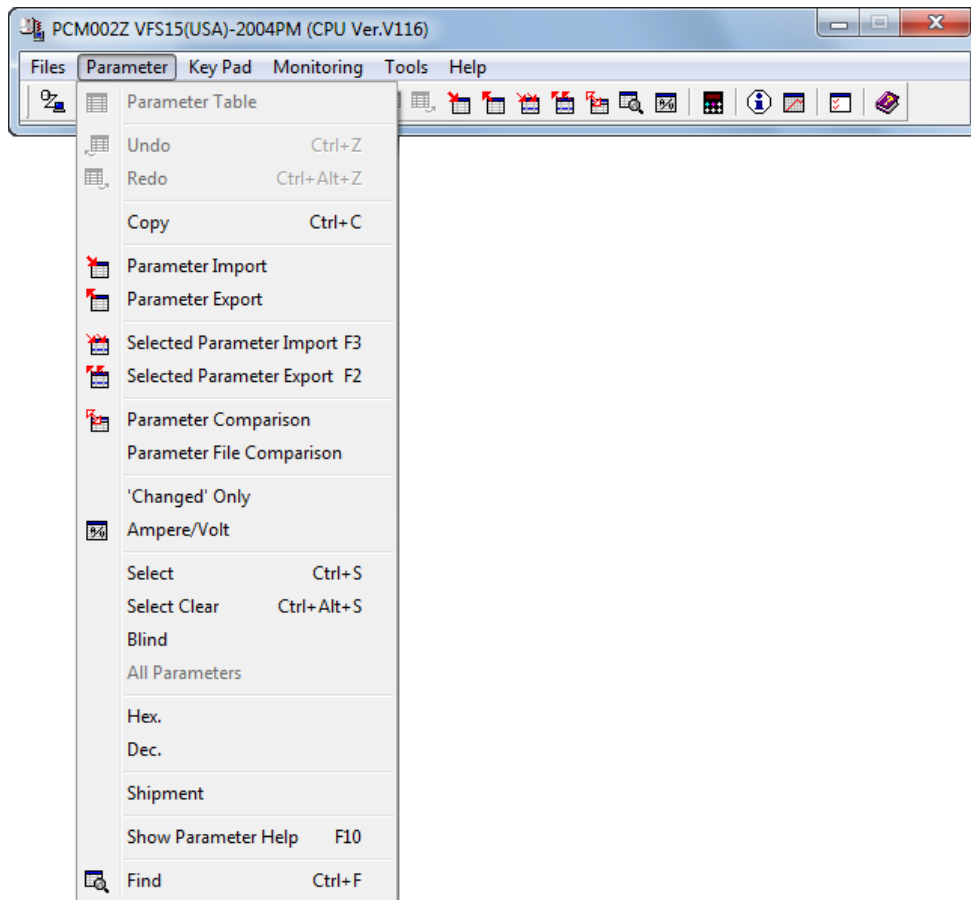


Figure 3-14 Parameter menu screen (Parameter Table display)

When the Parameter Table is not displayed, the menu below is displayed.

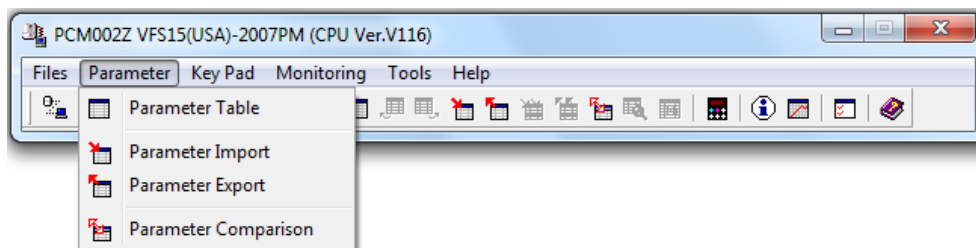


Figure 3-15 Parameter menu screen (Parameter Table non display)

3.2.1. Parameter Table

Parameters are listed in the table.

| Title | Comm. No. | Function | Set Val. | Low limit | Up limit | Unit |
|-------|-----------|---|----------|-----------|----------|--------|
| AUA | 0090 | Application easy setting | 0 | 0 | 7 | 1 |
| AUF | 0093 | Guidance function | 0 | 0 | 5 | 1 |
| AUL | 0094 | Overload characteristic selection | 0 | 0 | 2 | 1 |
| AU1 | 0000 | Automatic acceleration/deceleration | 0 | 0 | 2 | 1 |
| AU2 | 0001 | Torque boost setting macro function | 0 | 0 | 3 | 1 |
| CMOd | 0003 | Command mode selection | 1 | 0 | 4 | 1 |
| FMOd | 0004 | Frequency setting mode selection 1 | 0 | 0 | 14 | 1 |
| FMSL | 0005 | Meter selection | 0 | 0 | 53 | 1 |
| FM | 0006 | Meter adjustment gain | 100.0 | 0.1 | 250.0 | 0.1% |
| Fr | 0008 | Forward/reverse run selection (Panel key) | 0 | 0 | 3 | 1 |
| ACC | 0009 | Acceleration time 1 | 10.0 | 0.0 | 3600.0 | 0.1sec |
| dEC | 0010 | Deceleration time 1 | 10.0 | 0.0 | 3600.0 | 0.1sec |
| FH | 0011 | Maximum frequency | 80.00 | 30.00 | 500.00 | 0.01Hz |
| UL | 0012 | Upper limit frequency | 60.00 | 0.50 | 80.00 | 0.01Hz |
| LL | 0013 | Lower limit frequency | 0.00 | 0.00 | 60.00 | 0.01Hz |
| vL | 0014 | Base frequency 1 | 60.00 | 20.00 | 500.00 | 0.01Hz |
| vLV | 0409 | Base frequency voltage 1 | 230.0 | 50.0 | 330.0 | 0.1V |
| Pt | 0015 | V/F control mode selection | 0 | 0 | 8 | 1 |
| vb | 0016 | Torque boost value 1 | 6.0 | 0.0 | 30.0 | 0.1% |
| tHr | 0600 | Motor electronic-thermal protection level | 100 | 10 | 100 | 1% |

Figure 3-16 Parameter | Parameter Table screen

If a parameter column is clicked, parameters can be entered in “Set Val.” cells (white). The contents of other cells (yellow) cannot be changed.

The setting values that are different from the factory defaults are displayed as “**Changed**” on the right side of columns. Setting values of the parameters not written in the inverter after the change are displayed in bold.

* Some drives have Read Only Parameters such as AUL or F519. These parameters are displayed with Red color in the parameter table. So set these parameter functions at Start up window or set by the drive panel.

Key enter

- Enter** key:Determines the value entered as a setting value.
- Esc** key:Returns to the setting value that was not changed when pressed during changing.
- Del** key:Sets the setting value of selected parameters to the factory default value.
- F3** key:Imports the setting value of selected parameters from the inverter.
- F2** key:Exports the setting value of selected parameters in the inverter.

Numeric value input by hexadecimal code: a numeric value entered with a “h” first is regarded as a hexadecimal code.

Display color

- Bold in gray**:Parameters (“Set Val.” only) for which writing to the inverter by using the **F2** key failed.
- Display in gray**:Parameters skipped when import from the inverter.
- Display in red**:Parameters unable to set to the inverter.

3.2.2. Undo / Redo

The operation executed by the **Enter** key is undone. The undo count can be specified with *Tools / Environment Options* (Section 3.5.1.)

When you redo the operation undone, execute **Redo**.

3.2.3. Copy

Fix cells (cells in gray) corresponding to the range selected with the mouse are transferred to a clipboard. **Paste** by Microsoft® Excel® or other software allows for paste in each cell.

3.2.4. Parameter Import / Parameter Export

Each parameter setting value is imported from the inverter, or the values specified in the *Parameter Table* are exported in the inverter.

If communications are impossible, communication errors will occur. Please confirm the connection or *Communication Setup*. If the CPU version of the inverter that communicates with the PCM002Z support CPU version is different, communication errors may occur (this is because parameters corresponding to the communication numbers specified on the PCM002Z side for import do not exist on the inverter side). In this case, press the **[OK]** button to skip, and continue parameter import.

* When the drive is in start setup menu ("SE" is blinking), the setting value of the parameter "SEt" (Comm. No. 0099) is 0.

The parameter communication number and function name skipped at *Parameter Import* is named as a file name showing "DD/HH/MM/SS", and can automatically be saved in a folder where this application was installed. (Related article *Environment Options* (Section 3.5.1.))

(Example: When read is complete at 2:21:43 p.m. on 25th, it shows 25d14h21m43s.txt.)

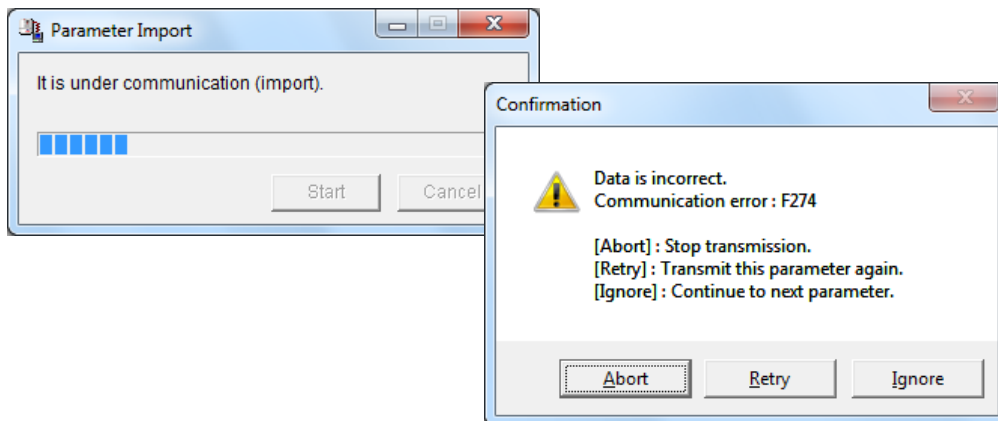


Figure 3-17 Communication Error screen



If parameters are written in the different drive from the drive selected at PCM002Z startup, there is possibility of incidents which may cause damage to inverters or motors.

If the selected drive Type/Form on PCM002Z is different from the connected drive, the following figure is displayed when *Parameter Import* or *Parameter Export* is executed,

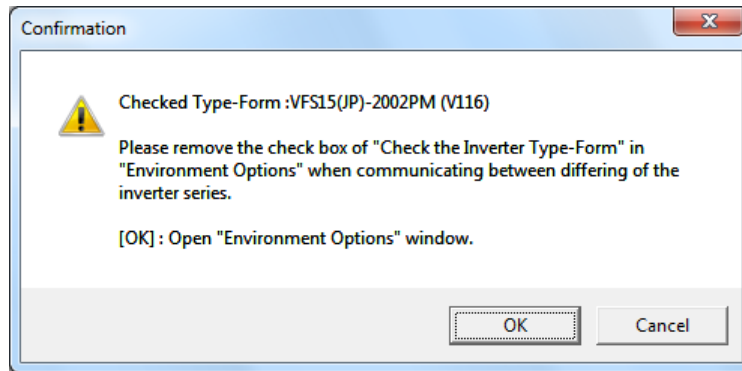


Figure 3-18 Warning screen for the the different drive

Similarly, the following figure is displayed for *Parameter Comparison*.

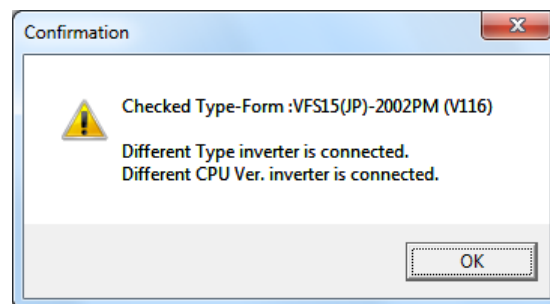


Figure 3-19 Warning screen for the the different drive

3.2.5. Selected Parameter Import / Export

The only parameters selected in *Select* (Refer to section 3.2.10) are import or export from / in the inverter. The parameter set up in non-display (Blind, Refer to section 3.2.11) is not read and written.

* When the drive is in start setup menu ("SEt" is blinking), the setting value of the parameter "SEt" (Comm. No. 0099) is 0.

3.2.6. Parameter Comparison

PCM002Z side parameter setting value is compared with the inverter side parameter setting value. When a different setting value is found, the following message is displayed. And *Blind* set parameters are also compared.(Section 3.2.11)

(Related article *Environment Options | Startup/Comm. tab page* (Section 3.5.1.1.))

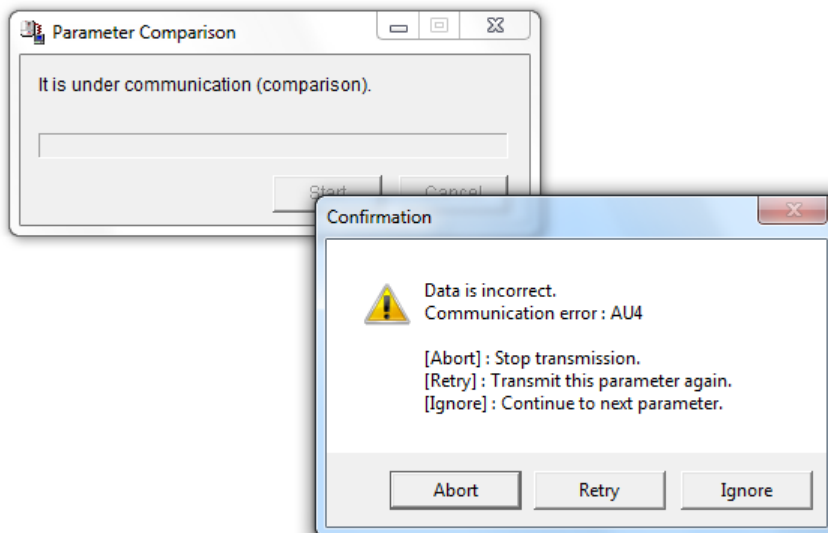


Figure 3-20 Comparison message screen

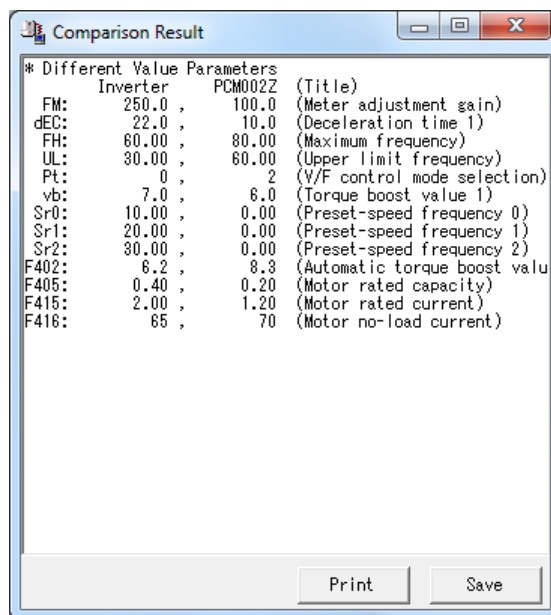


Figure 3-21 Comparison result screen

3.2.7. Parameter Comparison with File

PCM002Z side parameter setting value is compared with the saved parameter file.

When a different setting value is found, the following message is displayed. And *Blind* set parameters are also compared.(Section 3.2.11)

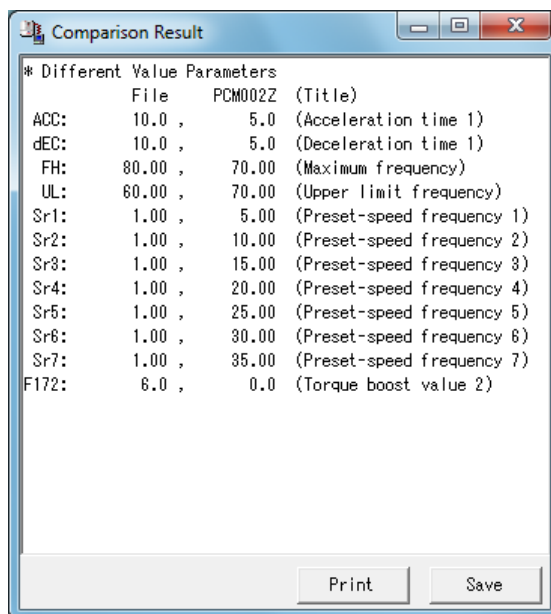


Figure 3-22 File Comparison result screen

3.2.8. 'Changed' Only

Only the parameters different from the factory default are displayed in the table. All parameters will be displayed by executing either '*Changed*' Only again or *All Parameters*.

3.2.9. Ampere/Volt

The parameter ("Motor electronic-thermal protection level" etc.), "**Set Val.** ", "**Low limit.**", "**Up limit.**" and "**Unit**" for Ampere/Volt function of the drive on *Parameter Table* are displayed in the Ampere or Volt unit. And the setup value can be set by *Ampere/Volt* unit. The value that is under internal minimum setting unit is rounded.

3.2.10. Select / Select Clear

Parameters with the cursor presented or parameters in the range selected with the mouse are parameters to be selected. This function can be performed only when cursor is in the "Set Val." column.

The background color of cells for the parameter setting values selected are displayed in blue. Following functions are target selected parameters.

- Selected Parameter Import
- Selected Parameter Export
- Blind
- Hex.
- Dec.
- Shipment

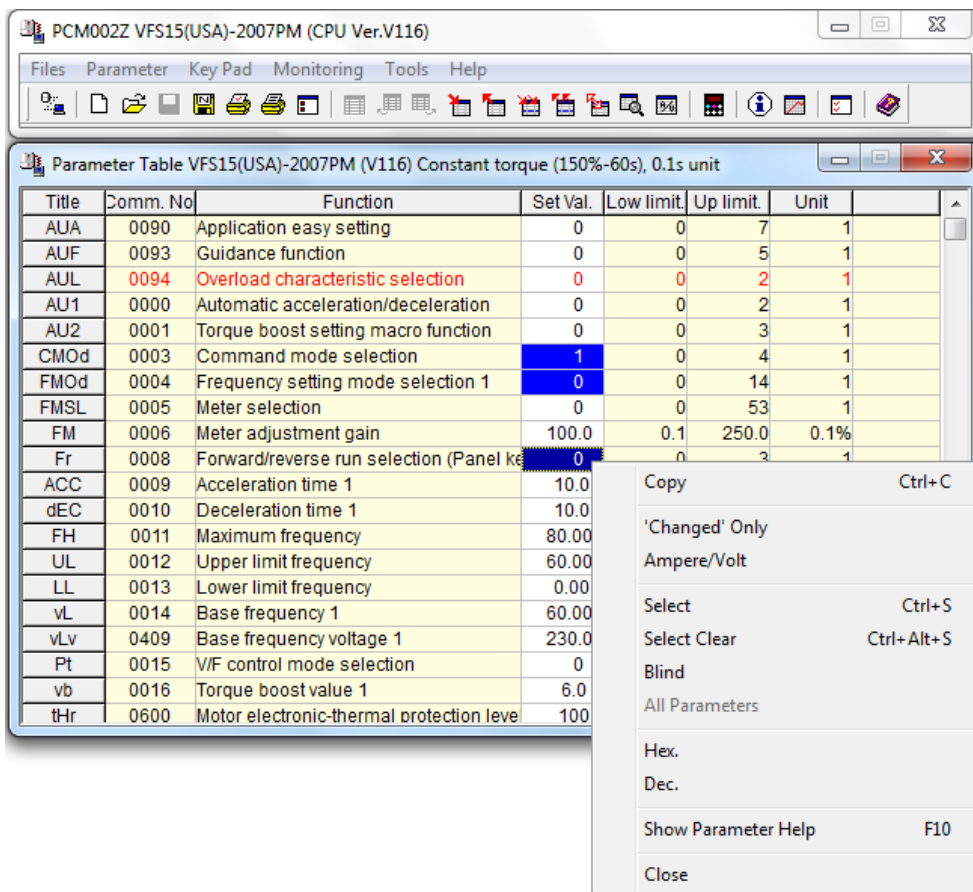


Figure 3-23 Comparison result screen

If it is executed again, Select is cleared only that parameter.

To clear, execute Select Clear. The Select Clear is executed for all selected parameters.

3.2.11. Blind

The selected parameters and the parameters with the cursor presented or the parameters in the range selected with the mouse are not displayed.

If "PCM002Z Parameter Data (*.pcm, and *.dat)" saved in this status is open with File | Open, the parameters of Blind will not be displayed.

* If Parameter Import / Export is executed, parameters of Blind will also be executed.

3.2.12. All Parameters

The parameters being performed with '*Changed*' Only or *Blind* are all displayed.

3.2.13. Hex. / Dec.

The selected parameters only are displayed in hexadecimal codes or decimal codes. When entering in hexadecimal codes, enter a "h" first, then enter setting values in hexadecimal codes. The value to be entered in hexadecimal codes is a value divided by the minimum setting unit.

Example: When setting the acceleration time to 10.2 seconds by VFS15

Since the minimum setting unit is 0.1, an expression is $10.2 / 0.1 = 102$

When this is converted into hexadecimal codes, the product becomes 66, so the value to be entered is "h66".

* For VFA7, the minimum setting unit of the acceleration time is 0.01, so, the product becomes "h3FC".

3.2.14. Shipment

Factory default values of the selected parameters are displayed.

3.2.15. Find

When the [**Find**] button is clicked, the find window below is opened. So, enter character strings to be found, and click on the [**Find Next**] button. If a parameter matching the character string is found, the cursor will move to the applicable parameter. Items to be found are either a function name or a communication number.

If the cursor is on a cell in the *Parameter Table*, the content of that cell will be automatically displayed in “Find what” when the find window is opened.

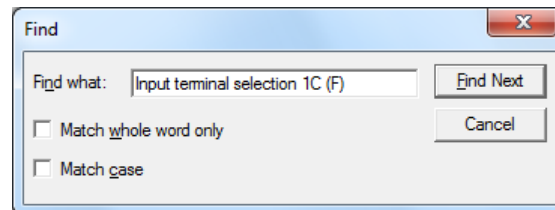


Figure 3-24 *Parameter | Find* screen

3.2.16. Parameter Information

If a parameter information file is prepared, individual parameter information can be displayed. Double-click on the *Parameter Table* can also implements the same function.

3.2.17. Other functions

(1) Popup menu

Click on the *Parameter Table* with the mouse right button, a popup menu will be displayed.

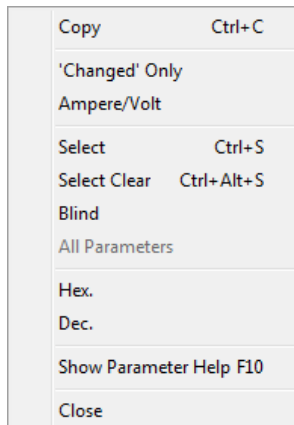


Figure 3-25 *Parameter* popup menu screen

(2) Column width change

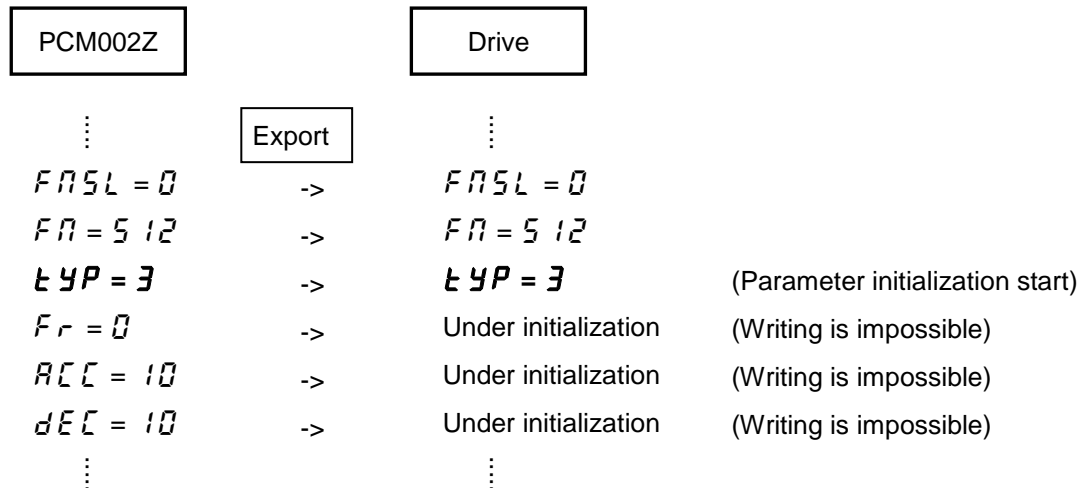
Drag the right-side border line of fix cells (the cells in gray on the top of the column) until you get the desired width.

| Title | Comm. No. | Function | Set Val. | Low limit | Up |
|-------|-----------|---|----------|-----------|----|
| AUA | 0090 | Application easy setting | 0 | 0 | |
| AUF | 0093 | Guidance function | 0 | 0 | |
| AUL | 0094 | Overload characteristic selection | 0 | 0 | |
| AU1 | 0000 | Automatic acceleration/deceleration | 0 | 0 | |
| AU2 | 0001 | Torque boost setting macro function | 0 | 0 | |
| CMOd | 0003 | Command mode selection | 1 | 0 | |
| FMOd | 0004 | Frequency setting mode selection 1 | 0 | 0 | |
| FMSL | 0005 | Meter selection | 0 | 0 | |
| FM | 0006 | Meter adjustment gain | 100.0 | 0.1 | |
| Fr | 0008 | Forward/reverse run selection (Panel ke | 0 | 0 | |
| ACC | 0009 | Acceleration time 1 | 10.0 | 0.0 | 3 |
| dEC | 0010 | Deceleration time 1 | 10.0 | 0.0 | 3 |

Figure 3-26 Column width change

3.2.18. Precautions when exporting

Exporting process with the All parameters or two or more parameters selected is executed in the order of communication numbers. Therefore, individually Export the parameter setting value (“*tYP = 3*”) by which the inverter communication process becomes temporary impossible at the time of exporting process.



3.2.19. AUL/F519

To edit the drive parameters that have parameter AUL/F519, select AUL/F519 settlement of the parameter on the start screen. AUL/F519 cannot be edited in the parameter table screen.

Operate in each following case.

1) When change parameters on the PC. (PCM002Z is not connected with the drive.) .

When change parameters on the PC, select the settlement of AUL/F519 parameters to set up on the start screen in advance.

2) When **Export Parameter** made in above 1) to the drive

The following Confirmation Message screen is displayed when AUL/F519 setup value of PCM002Z is different from a setup of the drive. In this case, select AUL (PCM)→AUL (INV) or F519(PCM)→F519 (INV) in accordance with indication of Confirmation Message screen and setup the drive in accordance with PCM002Z setting. After that, execute **Export Parameter**.

3) When **Import Parameter** and change parameter value.

Select the settlement of the AUL/F519 to same value of the drive on the start screen when you make the PCM002Z parameter data from the drive parameter. The following Confirmation Message screen is displayed when the selection of the start screen is different from the settlement of the AUL/F519 parameter set up of the drive. In this case, select AUL (INV)→AUL (PCM) or F519 (INV)→F519 (PCM) in accordance with Confirmation Message screen, and setup PCM002Z in accordance with the drive setting. On this occasion, parameters related to AUL/F519 are initialized.

After that, carry out **Import Parameter** and copy the parameter setup of the drive to PCM002Z parameter table.

For the details of each function of AUL/F519, refer to the instruction manual of the applicable model.

These parameters value in the parameter table is indicated with 0.

Present setup condition is indicated in the title of the parameter table.

| Title | Comm. No. | Function | Set Val. | Low limit | Up limit | Unit |
|-------|-----------|---|----------|-----------|----------|--------|
| AUA | 0090 | Application easy setting | 0 | 0 | 7 | 1 |
| AUF | 0093 | Guidance function | 0 | 0 | 5 | 1 |
| AUL | 0094 | Overload characteristic selection | 0 | 0 | 2 | 1 |
| AU1 | 0000 | Automatic acceleration/deceleration | 0 | 0 | 2 | 1 |
| AU2 | 0001 | Torque boost setting macro function | 0 | 0 | 3 | 1 |
| F512 | 0512 | Acceleration/deceleration 3 pattern | 0 | 0 | 2 | 1 |
| F513 | 0513 | Acceleration/deceleration 2 and 3 switch | 0.00 | 0.00 | 60.00 | 0.01Hz |
| F515 | 0515 | Deceleration time at emergency stop | 10.0 | 0.0 | 3600.0 | 0.1sec |
| F519 | 0519 | Setting of acceleration/deceleration time | 0 | 0 | 2 | 1 |
| F590 | 0590 | Shock monitoring | 0 | 0 | 3 | 1 |
| F591 | 0591 | Shock monitoring trip/alarm selection | 0 | 0 | 1 | 1 |

Figure 3-27 AUL and F519 in Parameter Table screen

When the setup value of the drive was different from the condition of the PCM002Z startup screen setting, the alarm screen is indicated at the time of the first communication to make PCM002Z parameter table correspond to the drive parameter table (Upper / Lower limit value and Unit of the parameters).

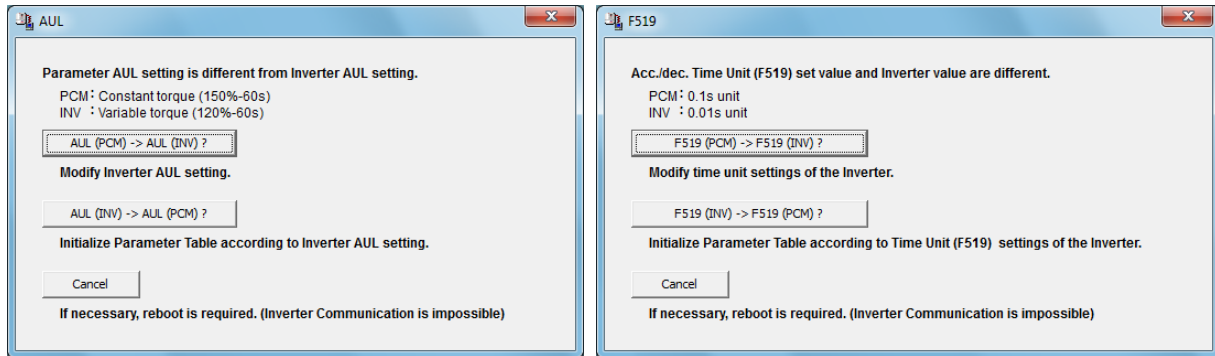


Figure 3-28 Confirmation Message screen

AUL (PCM) →AUL (INV)

Setup AUL of the drive is done in accordance with Setup of AUL of PCM002Z.

Do *Parameter / Parameter Export*, when you export PCM002Z parameter list to the drive.

AUL(INV)→AUL(PCM)

A parameter list is initialized in accordance with Setup of AUL of the drive.

Parameters related to Setup of AUL are initialized.

Do *Parameter / Parameter Import*, when you import the drive parameters to PCM002Z parameter list.

F519(PCM)→F519(INV)

Setup of F519 of the drive is done in accordance with a setup of F519 of PCM002Z.

Parameter / Parameter Export, when you export PCM002Z parameter list to the drive.

F519(INV)→F519(PCM)

A parameter list is initialized in accordance with Setup of F519 of the drive.

Parameters related to Setup of F519 are initialized.

Do *Parameter / Parameter Import*, when you import the drive parameters to PCM002Z parameter list.

Cancel

When select Cancel, the parameter image of the drive is different from the parameter image of PCM002Z.

PCM002Z changes communication buttons to disable (color is gray). To communicate with the drive, the restart of PCM002Z is required.

| | |
|----------------------|---|
| ⚠ Caution | |
| Mandatory | <p>▼ when parameters related to F519 of the parameter list are changed from the shipment setting value, and when the operation of F519 (INV)→F519 (PCM) is done, and if Import Parameter is not done, then only the unit of the setup value is changed.</p> <p>Ex. ACC setup value becomes ACC=0.99 sec when ACC setup value is ACC=9.9 sec and F519 is changed from F519=2 (0.1 sec. unit) to 1 (0.01 sec unit).</p> |

Refer to the instruction manual of each drive for the related parameters.

3.3. Key Pad

Same operations as for the inverter operation panel can be executed on the computer. When Frequency setting mode selection and Command mode selection are set to Panel Key pad, key pad on the PC can control the drive run and stop.

To quit the operation, click on the “Close” of the right below of the operation panel.



Figure 3-29 Key Pad screen (The right figure: in case of the VF-AS1.)

Click on the Key Pad with the right mouse button, the popup menu will be displayed.

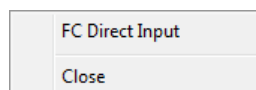


Figure 3-30 Key Pad popup menu screen

If you double click (or select *FC Direct input* from the popup menu) on the LED display, you can directly enter the operation frequency command by keys.

After entering any frequency, specify by pressing the **Enter** key. (In this case, it is necessary that the setting of the “**Frequency setting mode selection (F \overline{N} Qd)**” parameter of the inverter be “**Operation panel**”.)

Press the **Enter** key, then the Operation Panel display will appear after “F \overline{L} ” is alternatively displayed.

If the **Esc** key is pressed while the operation frequency command value is being entered, the input will be cancelled and the Operation Panel display will appear.

* The setting value written to the inverter by using *Key Pad* is not reflected on the *Parameter Table*.
Execute *Parameter Import* at request.

3.4. Monitoring

3.4.1. Inverter Info.

The information of the connecting inverter is displayed. When the connected drive's type data and capacity data are not installed to PCM002Z, "Err" is displayed.

* The value of "CPU2 Version" is displayed by the hexadecimal number.

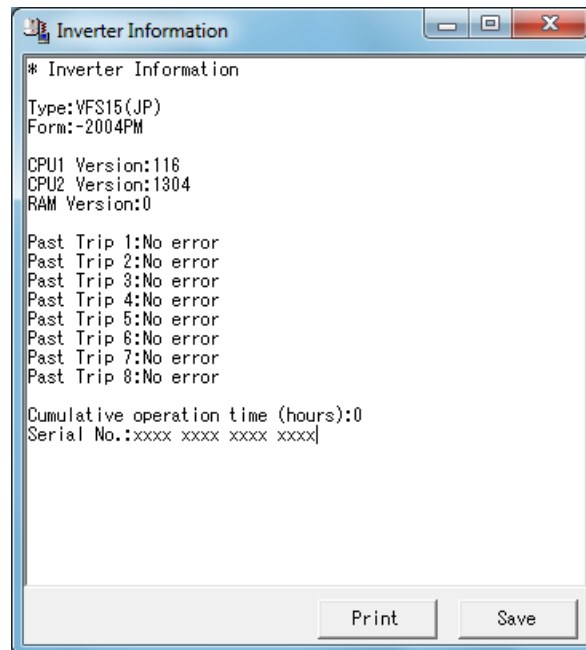
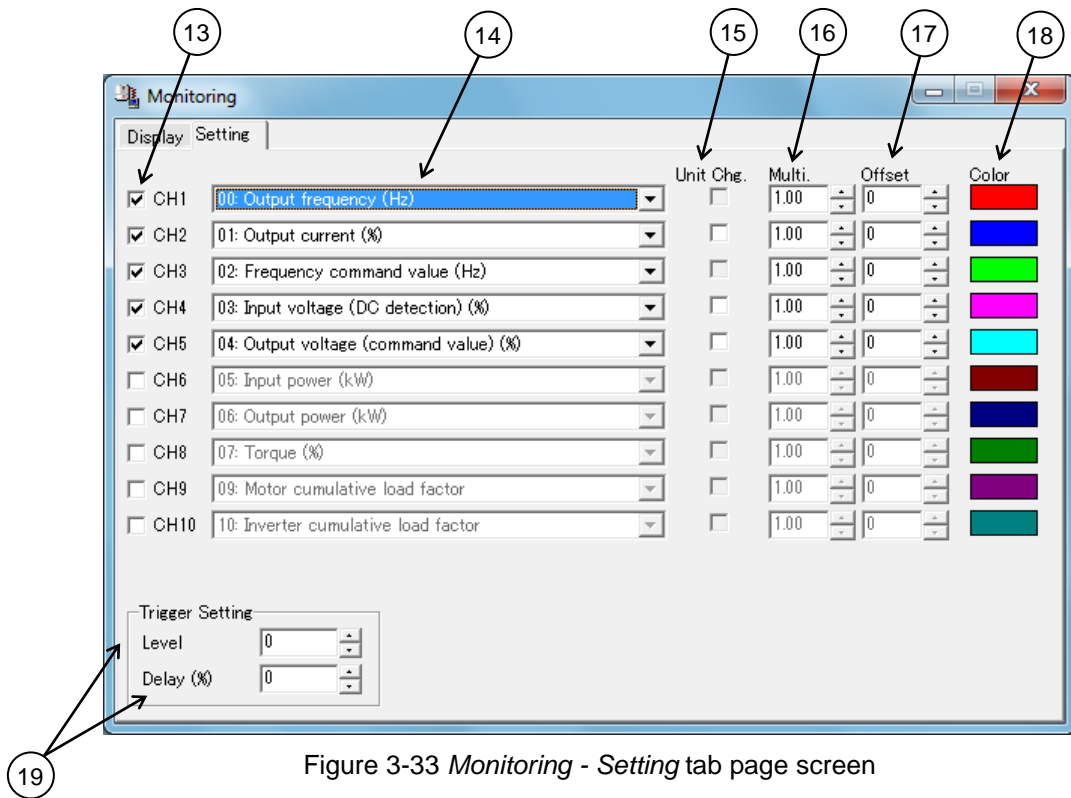
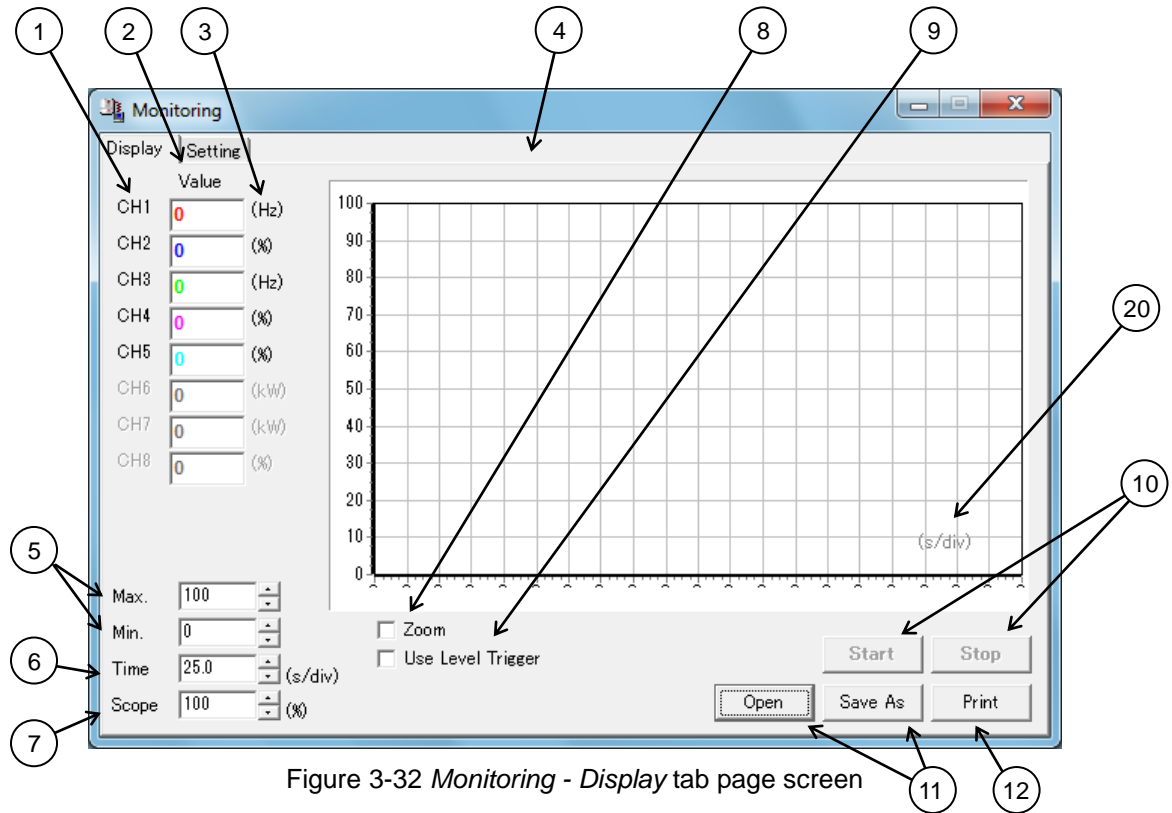


Figure 3-31 *Monitoring | Inverter Info.* screen

3.4.2. Monitoring

Up to 10 parameters can be displayed in graphs on the inverter status monitor.

* To monitor up to 10 parameters, check out “Display Alarm” and “Display Trip” check box in *Tools | Environment option | Key Pad/Monitor.*



Screen description

1) Monitor Channel

When "Use level trigger (9)" is checked, click to choose the trigger source. Chosen channel (CH) is displayed in a red bold character.

2) Monitor value

The monitored value of the inverter is displayed with the selected monitor item (14). The color of characters shows the color of the graph. When "Unit Chg. (15)" in a "Setting" tab page is checked, it changes and displays on the value for which it was suitable.

3) Unit of the monitor value

The unit of the monitor value is displayed. When "Unit Chg. (15)" is checked, the unit is changed to "A (ampere)" or "V (volt)."

4) Monitoring screen

The value read from the inverter is displayed graphically. Even when "Unit Chg. (15)" is checked, the graph indication of the value before unit conversion is given to a monitoring screen.

Move the mouse while clicking the right button to make it scroll.

If you click on the graph with the left button, details will be displayed.

* As for the displayed data, neither "Multi. (16)" nor "Offset (17)" is added.

* When the communication error occurs, the number of errors is displayed on the upper right of the monitor screen.

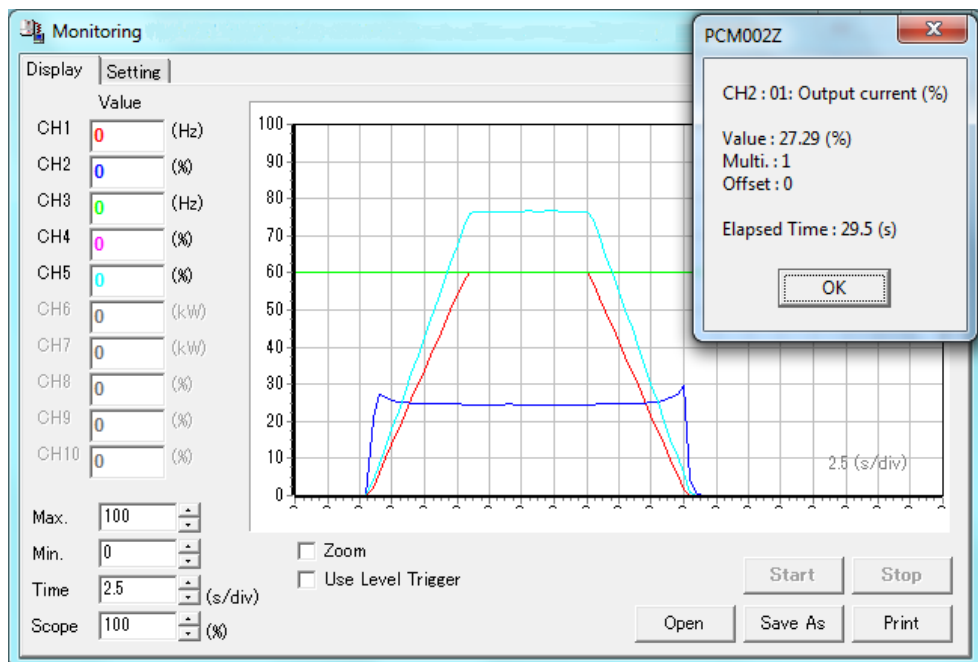


Figure 3-34 Monitoring - Display screen

5) Min., Max.

The Y-axis minimum and maximum of graph are set up. Adjustment range is -500 to 500.

6) Time axis setting

The maximum value of the adjustment range is 30s/div. The minimum value changes with communication rate and number of selected CHs (13). The minimum time-axis setting value and the maximum number of samplings when it can communicate become as shown in the following table.

* Depending on the conditions, such as PC processing speed, it may become longer than the following table.

* Max. number of samplings can be changed at *Environment Options* (Section 3.5.1.3.)

| Number of CH | Baud rate (bps) | | | | | | Max. Number of Samplings |
|--------------|-----------------|-------|-------|-------|--------|--------|--------------------------|
| | 1,200 | 2,400 | 4,800 | 9,600 | 19,200 | 38,400 | |
| 1 | 1.25 | 0.75 | 0.75 | 0.5 | 0.5 | 0.5 | 3000 |
| 2 | 2.5 | 1.5 | 1.5 | 1 | 1 | 1 | 1500 |
| 3 | 3.75 | 2.25 | 2.25 | 1.5 | 1.5 | 1.5 | 1000 |
| 4 | 5 | 3 | 3 | 2 | 2 | 2 | 750 |
| 5 | 6.25 | 3.75 | 3.75 | 2.5 | 2.5 | 2.5 | 600 |
| 6 | 7.5 | 4.5 | 4.5 | 3 | 3 | 3 | 500 |
| 7 | 8.75 | 5.25 | 5.25 | 3.5 | 3.5 | 3.5 | 429 |
| 8 | 10 | 6 | 6 | 4 | 4 | 4 | 375 |
| 9 | 11.25 | 6.75 | 6.75 | 4.5 | 4.5 | 4.5 | 333 |
| 10 | 12.5 | 7.5 | 7.5 | 5 | 5 | 5 | 300 |

* Gray: Default Value

7) Scope

The scale of the monitoring screen (4) is displayed and set up. Changing this, the graph can be stored in one screen or can be expanded.

8) Zoom

When this is checked, the graph can be expanded by clicking the left button in a monitoring screen (4), and can be reduced by a right button click.

* The data detailed display function and scroll function are unavailable.

9) Use level trigger

(Refer to 3.4.2.3.)

10) Start/Stop

When [**Start**] button is clicked, starts to read the selected monitor item (14) from the inverter.

When [**Stop**] button is clicked, stops reading.

* The menu items which disturbs the communication are unavailable during monitoring.

11) Open / Save As

(Refer to 3.4.2.1.)

12) Print

(Refer to 3.4.2.2.)

13) CH selection

The checked monitor items (14) are monitored by graph.

* *Environment Options* | "Display Alarm" and "Display Trip" are respectively treated as one of the monitor items. Therefore, when these are checked, selectable CHs become 9 or 8.

For example, if "Display Alarm" and "Display Trip" on *Environment Options* are checked with 5CHs on Monitoring selected, 7CHs will be monitored.

(The minimum setting value of a time-axis also becomes the same as the time of 7CH selection).

14) Monitor item

Select the monitor items from down list in the inverter status monitors.

15) Unit selection

The monitoring value is converted and displayed on voltage (V) and current (A). When the selected item is not convertible or CH selection (13) is not checked, this selection becomes unselectable.

16) Multiplication

The monitoring value can be multiplied by the value set up here, and indicated on the graph.

When this value is changed, it is reflected to the graph except during operation.

The adjustment range is 0.1 to 10.

17) Offset

The monitoring value can be added to the value set up here, and indicated on the graph.

When this value is changed, it is reflected to the graph except during operation.

The adjustment range is 0 to 500.

18) Graph color

The displayed graph color is set up. When color sample is double-clicked, the color dialog will be displayed. Select any color.

19) Trigger level/Trigger delay

(Refer to 3.4.2.3.)

20) Time axis

When [**Open**] button is clicked and *.mon file is opened, the time-axis at the time of the file last save is displayed. Change of "time axis setting (6)" or CH selection (13) displays the same value as a time axis setting.

3.4.2.1. Open/Save as

The displayed graph and the opened file can be saved/read (only *.mon format) in the following file formats. The opened file name is displayed on the title bar of the *Monitor*.

1) “PCM002Z Monitor Data (*.mon)”

This save format is only for PCM002Z, graph can be displayed again to the monitoring screen with the [Open] button of a "Display" tab page.

If the file that was saved by the different inverter type is chosen, it cannot be opened.

(The file saved by PCM001Z also can be opened.)

2) Monitor Data (*.csv)

The csv format file can be opened with a spreadsheet application.

* As for the saved data, neither "Multi. (16)" nor "Offset (17)" is added.

* In V1.05 or later version, when checked [Unit selection] button, the monitoring value is converted voltage (V) and current (A), and saved as it's (V) or (A) unit.

3) Monitor Picture (*.bmp)

The currently displayed graph on the monitoring screen is saved in picture form. The saved picture corresponds to the part currently displayed on the screen. When you need to record a given area, please scroll or zoom so that the required area is displayed on the screen. Moreover, when you need to save the whole graph, please save with "Scope" set to "100 (%)".

Save format can be chosen from the following:

- bmp format : Color information is not lost by compress but the file size is large.
- jpg format : File is made smaller using compression but some color information is lost.
- wmf format : This format is aimed at expansion/reduction.

These files can be read with image-processing application.

3.4.2.2. Print

The monitor picture is printed. The image to print can be checked on the preview screen.

Clicking on **[Print]** button starts printing. Paper size is A4 and the orientation is portrait by default.

Those parameters can be set in *File | Page Setup* (refer to 3.1.5).

* As for the printed data (minimum value, maximum value, start value, and last value) of each graph, neither "Multi. (16)" nor "Offset (17)" is added.

* When the trigger is not used, "-" is displayed to "Trigger Source" and soon.

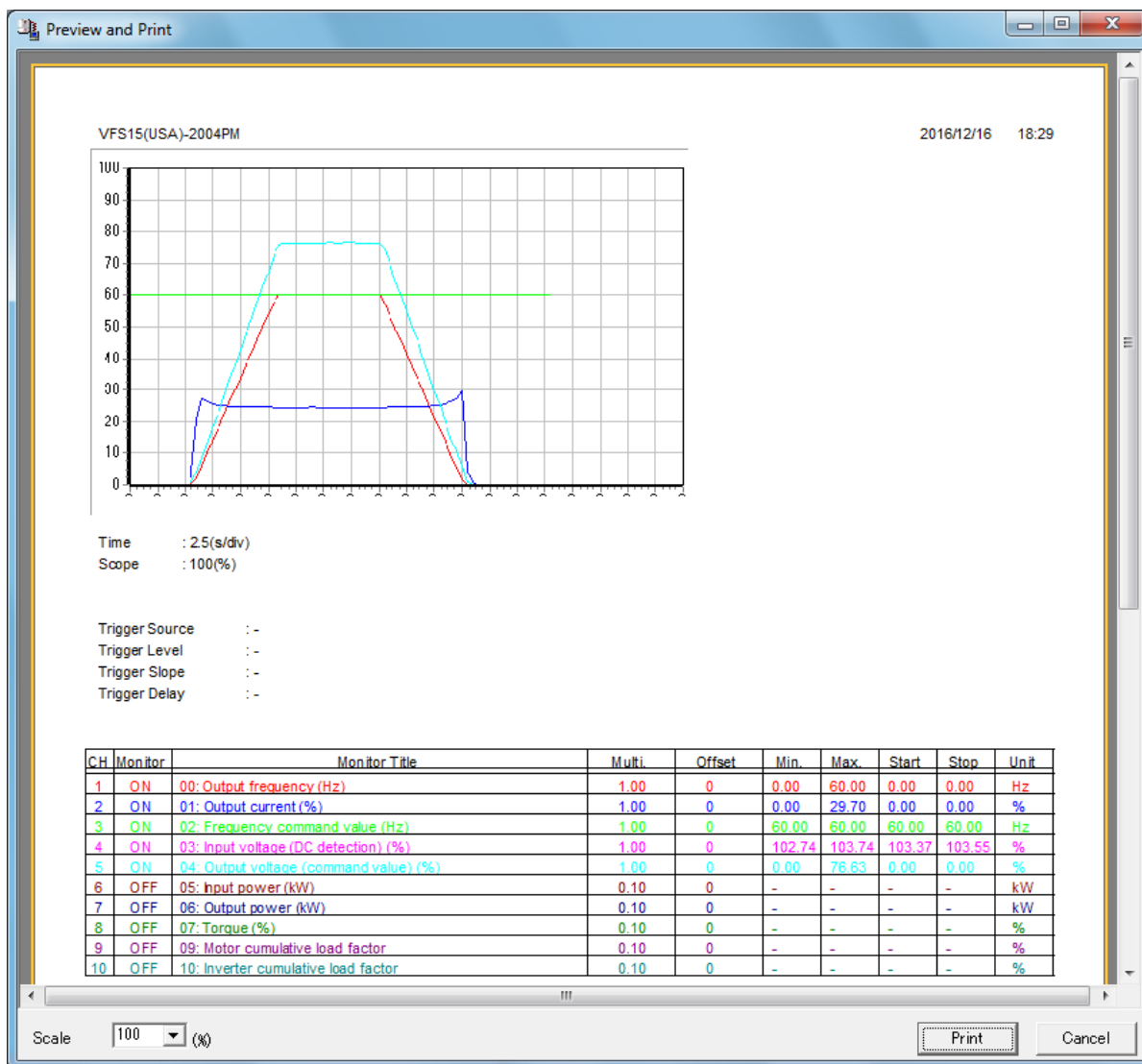


Figure 3-35 Monitoring | Print screen

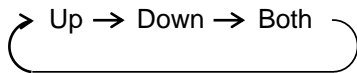
3.4.2.3. Use level trigger

If "Use Level Trigger (1)" of the "Display" tab page is checked, a trigger level marker (5), "Source (2)", and "Slope (3)" will be displayed, and trigger source CH (4) is displayed in red.

Trigger source: This can be chosen by clicking "CH (4)" or double-clicking "Source (2)".

Trigger level: This can be set dragging the trigger level marker (5) with the mouse, or is set up using "Trigger Setting" - "Level (Figure 3-33 (19))".

Trigger slope: This changes as follows when double-clicking the "Slope (3)".



If the [Start] button is clicked, the graph will be displayed after the monitored value of the trigger source CH exceeds trigger level (when a trigger slope is on "standup").

Trigger delay is the rate to the maximum samplings by the number of selected CH.

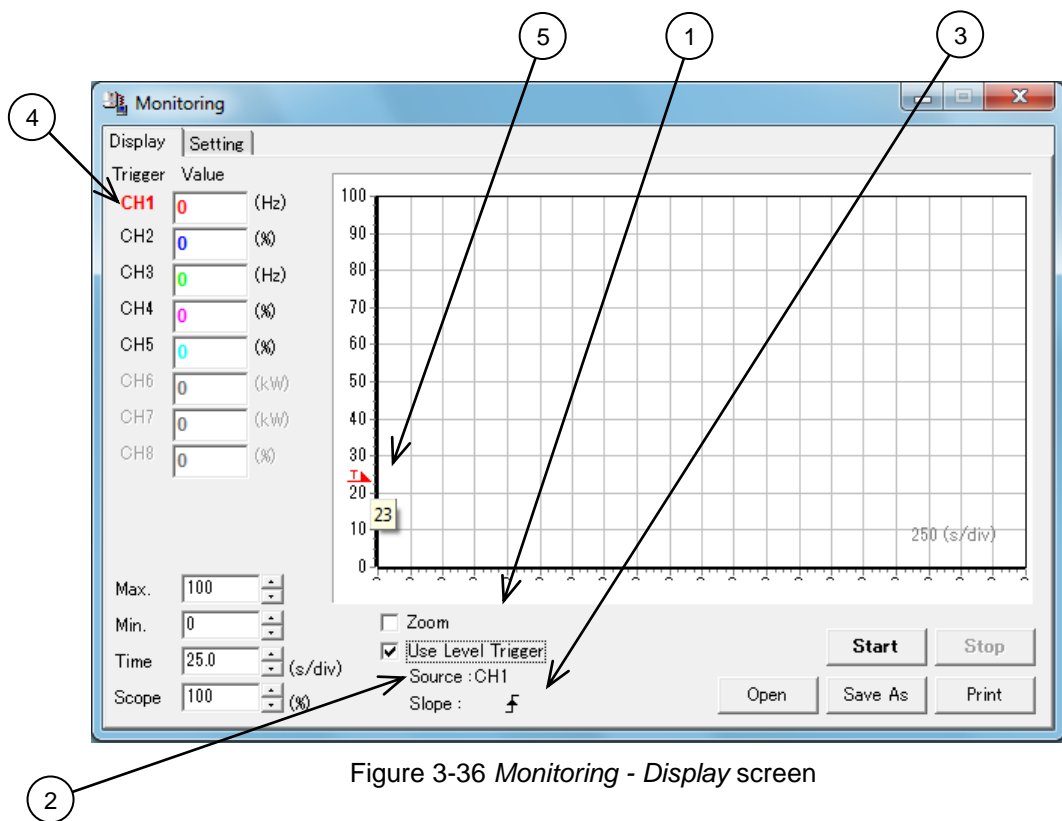


Figure 3-36 Monitoring - Display screen

When checking *Environment Options* - "Continuous", "Continuous Monitoring" is displayed on the position of "Use Level Trigger" (Refer to 3.5.1.3).

3.4.2.4. Continuous Monitoring

Continuous monitoring is possible up to 24 hours max. Data is saved as csv file format. When checking *Environment Options* - "Continuous", "Continuous Monitoring (1)" is displayed on the position of "Use Level Trigger" (Refer to 3.5.1.3).

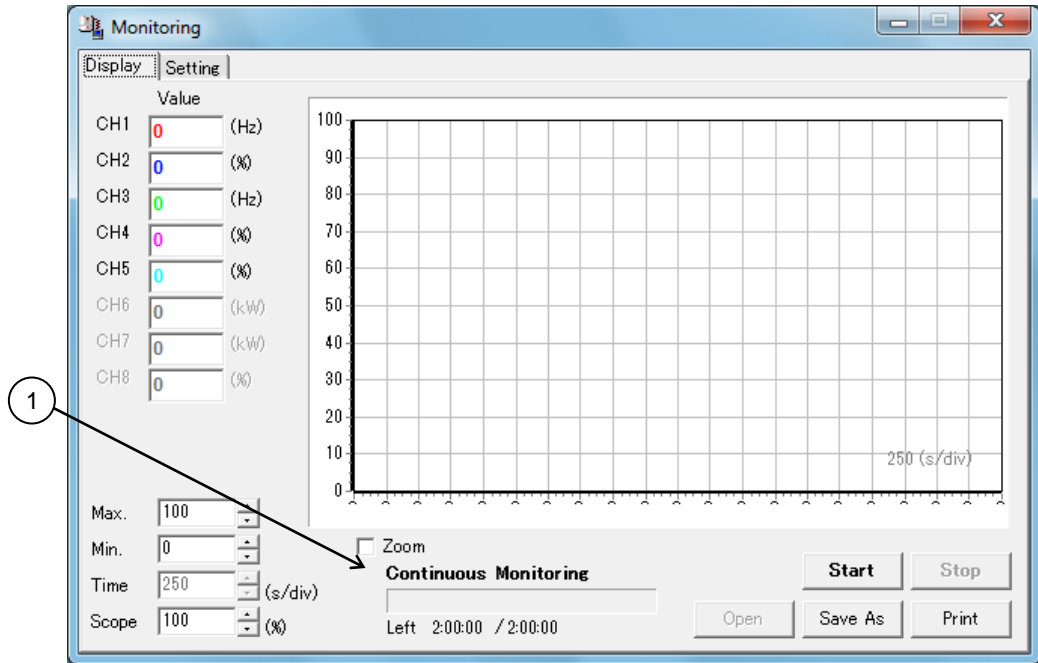


Figure 3-37 Monitoring - Continuous Monitoring screen

3.5. Tools

3.5.1. Environment Options

PCM002Z option setup is executed.

3.5.1.1. Startup/Comm.

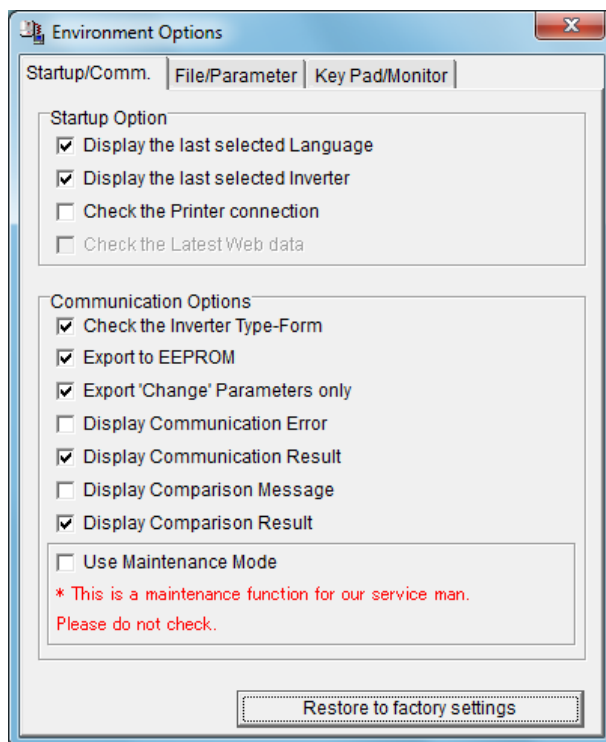


Figure 3-38 *Environment Options - Startup/Comm.* tab page screen

[Restore to factory settings]

All items in "Startup/Comm.", "File/Parameter" and "Key Pad/Monitor" pages of *Environment Options* return to an initial value.

Startup Options

(1) Display the last selected Language

When the check box of this item is checked, the lastly selected language automatically appears when PCM002Z is started. If not checked, Japanese language is selected.

(2) Display the last selected Inverter

If the check box of this item is checked when PCM002Z is started, the previously selected drive is automatically selected regardless of whether communication is enabled or disabled (COM1 - 15). If this check box is not checked, the system examines ports on the PC when started and if a port is available, the system checks the communication settings on the inverter and displays the corresponding drive type. (It may take about 1 minute.)

* It cannot identify AN, WN or WP.

(3) Check the Printer connection

If the check box of this item is checked when PCM002Z is started, if no printer is available, the menu about printing becomes unselectable.

If this check box is not checked, the printing menus are enabled regardless of whether a printer is available.

Communication Options

(1) Check the Inverter Type-Form

When the check box of this item is checked, connected inverter type-form is checked at the time of *Parameter Import / Export / Comparison* selection. If it differs from the PCM002Z side, a message is displayed.

- * Type and Form are separately checked, and a message is displayed even when only Forms differ.
- * The interface logic specification of the drive ("WN" etc.) is not investigated. Therefore, "Different Capa inverter is connected" might be displayed.
- * This item is checked again when PCM002Z is re-executed even if the check was removed.

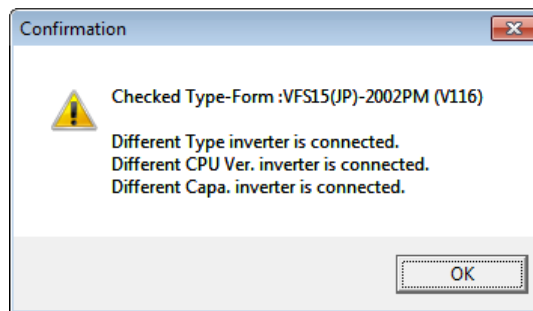


Figure 3-39 Check Inverter Type-Form result screen

(2) Export to EEPROM

If *Parameter Export* and *Selected Parameter Export* are executed with this item checked, the setting value will also be exported to RAM and EEPROM. (The setting value written will be retained even if the inverter power supply is turned off.)

If a check is cleared from this item and "TOSHIBA protocol" is selected, the setting value will be exported only to the RAM of the inverter, consequently, the setting value exported will be lost when the inverter power supply is turned off.

If "MODBUS-RTU protocol" is selected, the setting value will be exported to RAM and EEPROM regardless of this "Export to EEPROM" item check.

(3) Export 'Change' Parameters only

If *Parameter Export* is executed with this item checked, the parameters only changed from the factory default values will be exported to the inverter. If this item is not checked, all parameters will be exported to the inverter.

(Reference article Precautions when exporting (Section 3.2.18).)

(4) Display Communication Error

If this item is checked, the message will be displayed if a communication error occurs at the time of *Parameter Import / Export / Comparison*. If this check box is not checked, even if the communication error occurs, the message is not displayed.

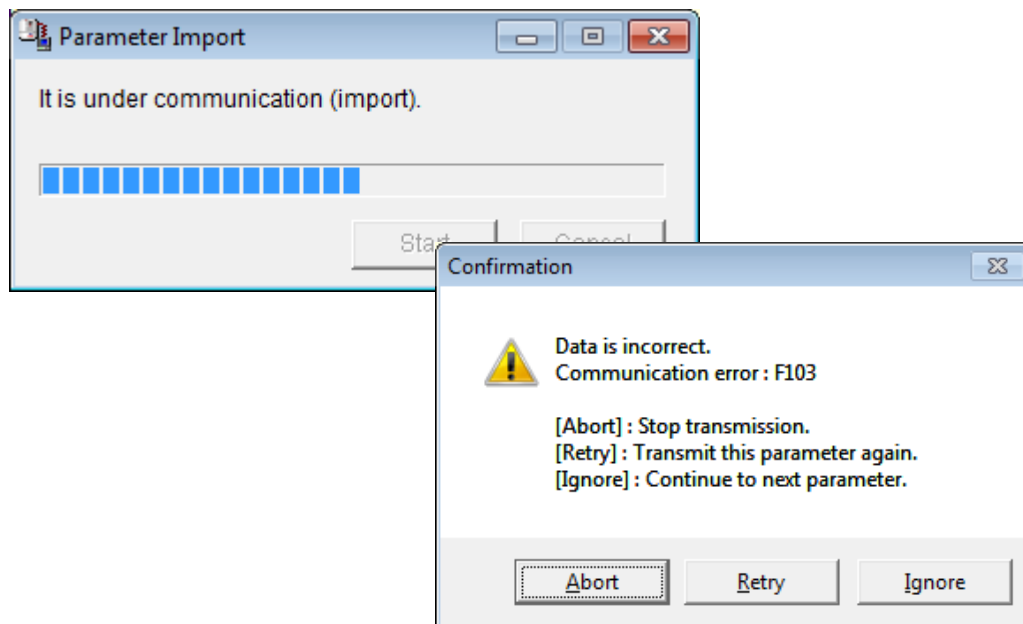


Figure 3-40 Communication error screen

(5) Display Communication Result

If this item is checked, the communication result is displayed *Parameter Import / Export / Comparison* finished.

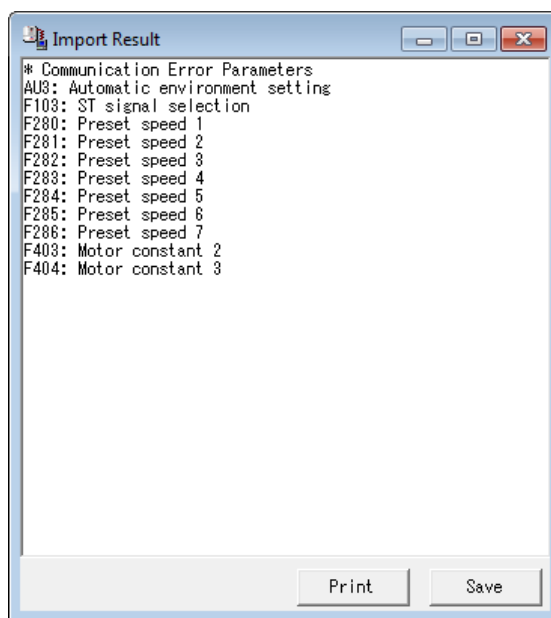


Figure 3-41 Display Communication Result screen

(6) Display Comparison Message

If this item is checked, when the value on PCM002Z differs from the value on the inverter at the time of *Parameter Comparison*, the message will be shown.

(7) Display Comparison Result

If this item is checked, the communication result is shown by list at the time that *Parameter Comparison* finishes (refer to 3.2.6).

(8) Use Maintenance Mode

When this box is checked, *Parameter Import / Export / Comparison* will be done for the inverter control parameter area as well as for the user parameter area. When the check box of this item is not checked, *Parameter Import / Export / Comparison* will be done for the user parameter area (parameters described in the Inverter instruction manual).

* This is a maintenance function for our service man. Please do not check.

However, only the user parameter area (described in the inverter instruction manual) will be displayed on the *Parameter Table* display.

3.5.1.2. File/Parameter

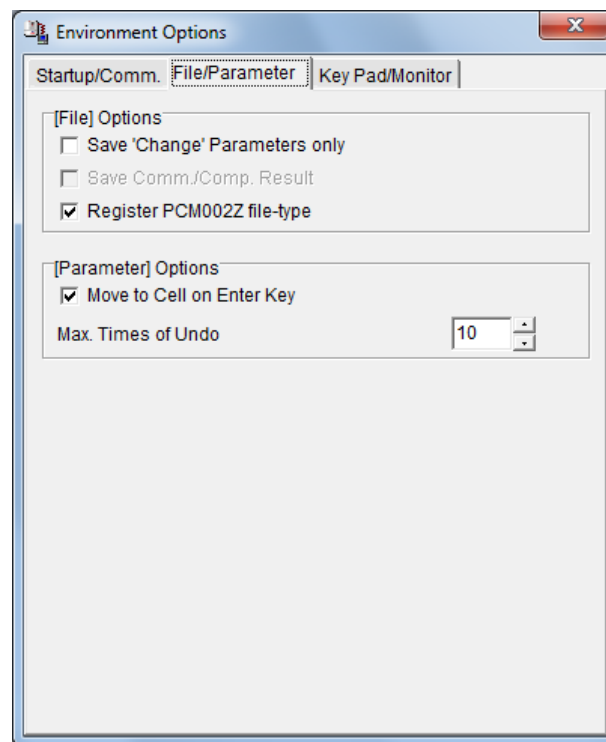


Figure 3-42 *Environment Options - File/Parameter* tab page screen

[File] Options**(1) Save 'Change' Parameters only**

If this item is checked, only the parameters changed from the factory default value are saved ("PCM002Z Parameter Data (*.pcm)"). If this item is not checked, all parameters will be saved in files.

(2) Save Comm./Comp. Result

If this item is checked, the parameters skipped by *Parameter Import / Export*, or Result of *Parameter Comparison* will automatically be saved.

(Reference article *Parameter Import / Parameter Export / Parameter Comparison* (Section 3.2.4 / 3.2.6).)

This function can be selectable at [Tools], "Environment Options" Tab, "Communication Options", "Display Communication Result" is not checked and "Display Comparison Result" is not checked.

(3) Register PCM002Z file-type

If this item is checked, *.pcm format file is related with PCM002Z. Double-clicking on a *.pcm file in the *Windows Explorer*, PCM002Z will start and open the saved inverter type-form and CPU version. If this check is unchecked, correlation will be canceled.

[Parameter] Options**(1) Move to Cell on Enter key**

If this check is cleared, the cursor will not move to the cell below when pressing the key in the *Parameter Table*.

(2) Max. Times of Undo

Maximum "Undo" count specification.

3.5.1.3. Key Pad/Monitor

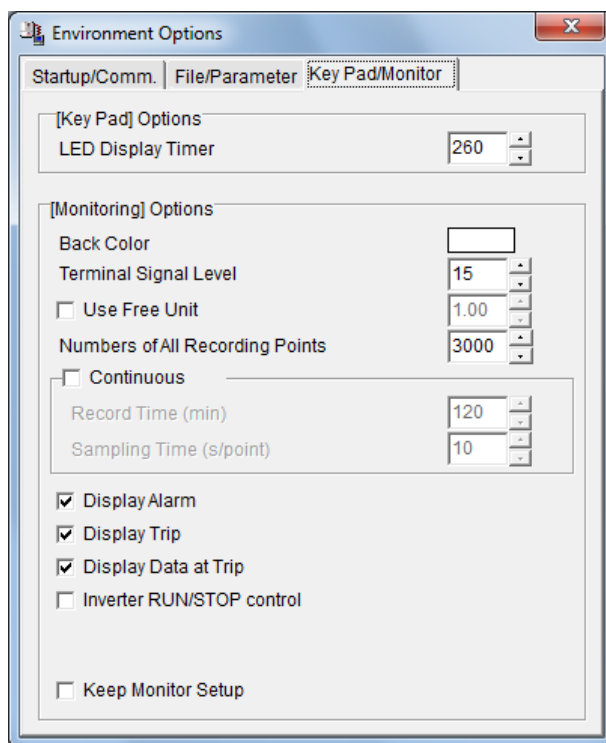


Figure 3-43 Environment Options - Key Pad/Monitor tab page screen

[Key Pad] Option**LED Display Timer**

If this value is decreased, time interval of the display led blinking will be shortened.

[Monitoring] Options**(1) Back Color**

Graph background color specification. If you double click on the color sample, the color dialog box will be displayed. Select any color.

(2) Terminal Signal Level

Value displayed in the graph as a terminal high level.

(3) Use Free Unit

If this item is checked, the value displayed in the *Monitor* is multiplied by the value of this setting.

* Priority is given over "Unit Chg." in "Display" tab page.

(4) Numbers of All Recording Points

The number of recording points is set. The recording data is put on the memory of PC during monitoring. So, set this value with enough margins for the memory of PC.

(5) Continuous

If this item is checked to execute *Monitor*, monitoring is possible 24 hours max. Specify a recording time and a sampling time. The “**Record Time**” and the “**Sampling Time**” field will become accessible for setting.

If *Monitor* is started with this item checked, the approximate space area required to save the data read from the inverter will be displayed.

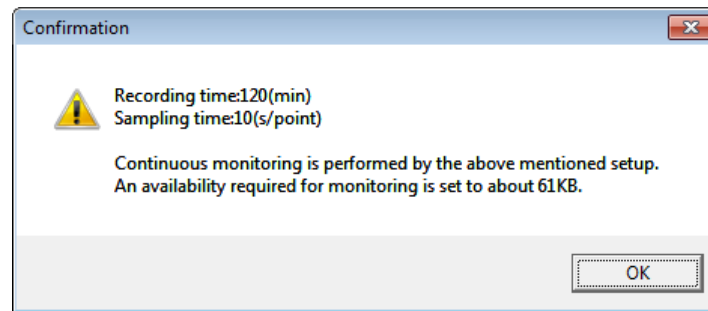


Figure 3-44 *Continuous* monitoring confirmation screen

If the [OK] button is clicked, a file selection window will appear. Specify the file where to save data, and close the window. Data are saved in a form of csv when [Start] button is pressed.

If the [Start] button is pressed after “**Maximum value**” is specified at request, data read will begin. (The value converted to the value for graph display is displayed on “**Time axis**”.)

* The data saved in a csv form are the values with “**Display Multiplication**” and “**Offset**” not added.

(6) Display Alarm

If this item is checked, the alarm is displayed on a monitoring screen when alarm is generated at the inverter side.

(7) Display Trip

If this item is checked, the trip is displayed on a monitoring screen when trip is generated at the inverter side.

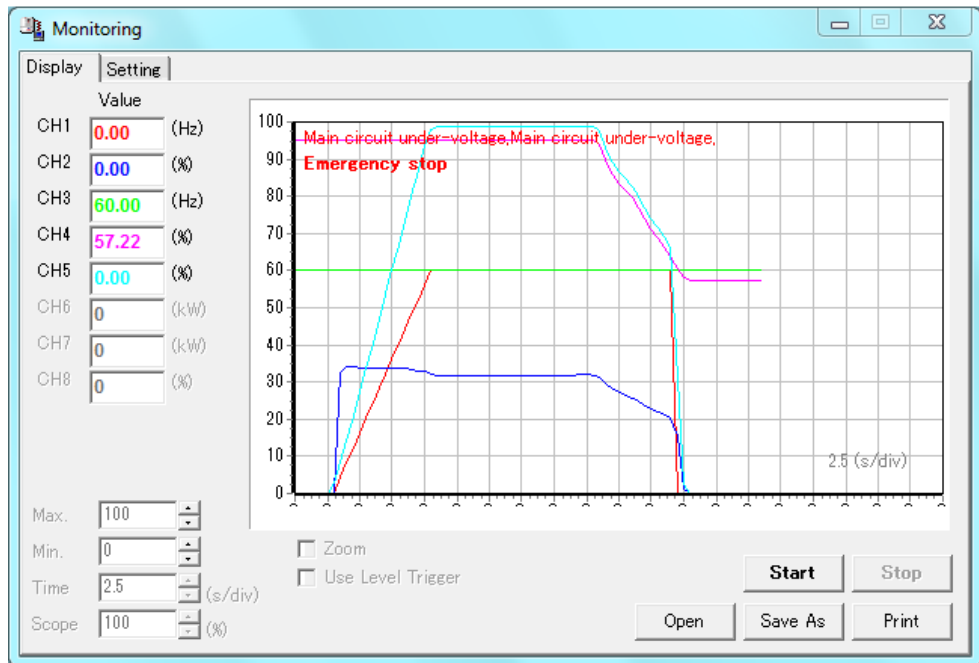


Figure 3-45 Display Alarm/Trip screen

(8) Display Data at Trip

If this item is checked, monitoring is stopped when trip is generated at the inverter side, and all monitor item, value, are displayed

When "Display Trip" is not checked, this check box is unselectable.

* The value of "CPU2 Version" is displayed by the hexadecimal number.

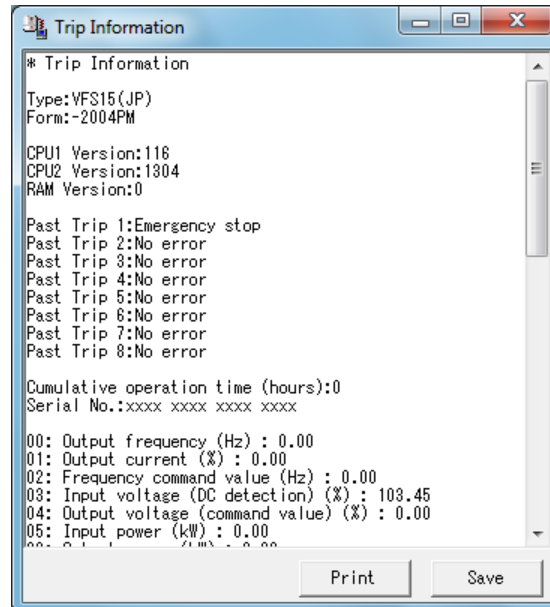


Figure 3-46 Trip information screen

(9) Inverter RUN/STOP control

If this item is checked, run/stop of inverter is possible from PC during Monitor.

* "Operation command mode selection" parameter of inverter needs to set "Panel".

RUN [Shift] + [F9]

STOP [F9]

(10) Keep Monitor Setup

If this item is checked, settings related to *Monitoring* (setting contents of *Environment Options* and *Monitoring*) will be saved, and monitoring can be performed with the same setting at the next setup.

3.5.2. Add / Remove type

Each model name indicated in this screen shows the model which it is added to and which can be deleted. And, the model that a check is on the check box shows the model which it has already been added to the selectable model.

(1) The addition of the model and deletion

Uncheck the check box of the model name, and click on the "OK" button when you delete a model.

And, put a check in the check box of the model name, and click on the "OK" button when add a model.

(2) The addition of the model which specified CPU version and deletion

Uncheck of the check box of the model name (CPU version), and click on the "OK" button when delete the specific CPU version data of each model.

And, check the check box of the model name (CPU version), and click on the "OK" button when add it.

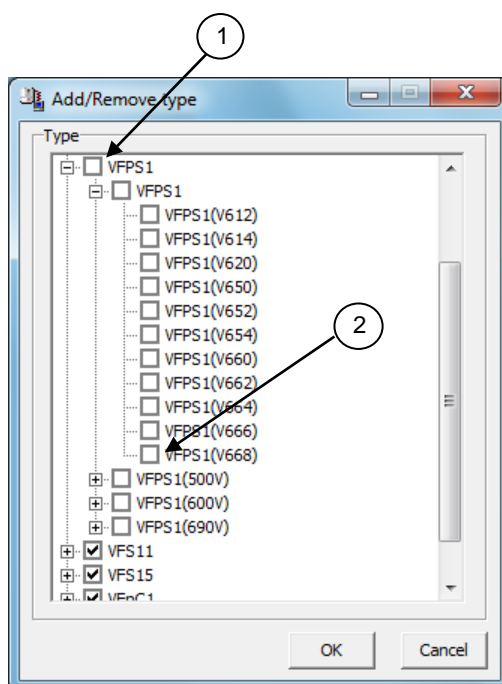


Figure 3-47 Add / Remove type screen

3.5.3. Maintenance mode

The maintenance mode is a service support-specific mode that allows for the display and editing of parameter regions related to inverter control.



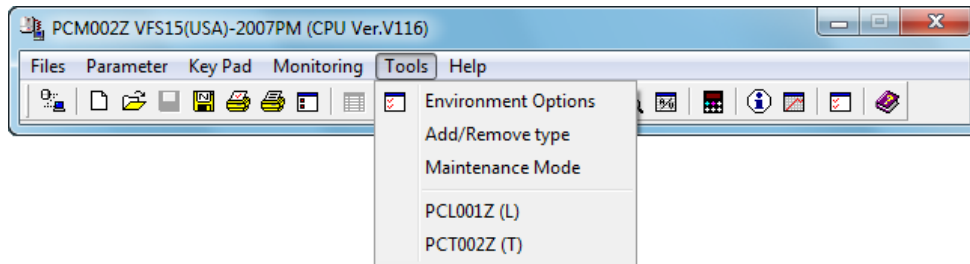
Caution

Users are not allowed to change setting values other than user parameter regions. This may cause accidents or damages to the inverter or the motor.

3.5.4. Related PC tool (PCL00xZ, PCT00xZ)

Related PC tools (My function Tool (PCL00xZ), Trace Tool (PCT00xZ)), that corresponds to selected model, are displayed.

In advance, download those PC tools from Toshiba Inverter website or contact your Toshiba distributor, and save to the local disc drive. When select PC tool on the PCM002Z menu, the default folder (PCM002Z installed folder) is displayed. So select the downloaded PC tool in the local disk drive. The file locations are saved, so next time PC tools folder is opened.



3.6. Help

3.6.1. Help

The PCM002Z online help file is not prepared.

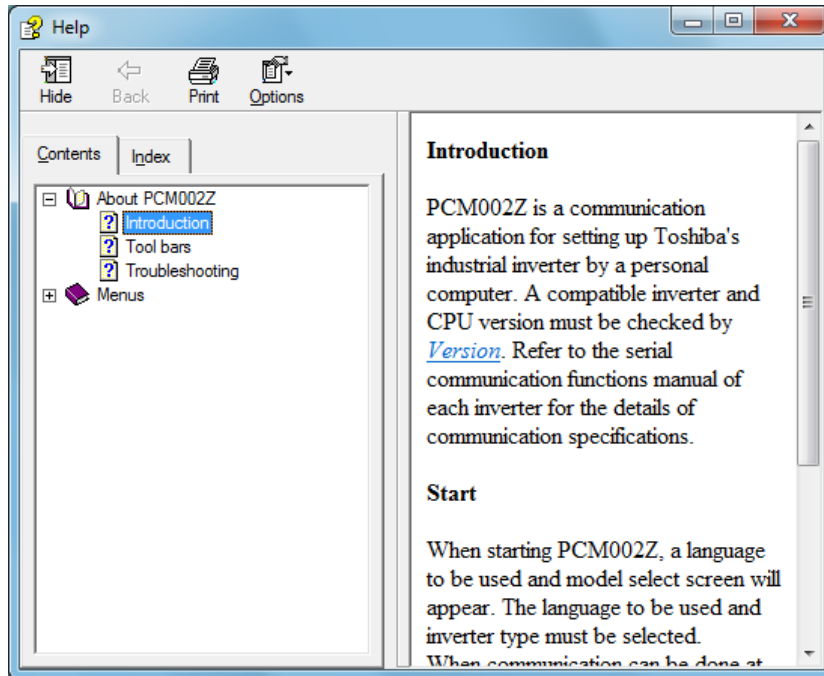


Figure 3-48 Help screen

3.6.2. About PCM002Z

The PCM002Z version number and corresponding inverters, and CPU versions are displayed.

* If the CPU version of the inverter currently used is newer than the version displayed in “**Version information**”, obtain the latest parameter data.

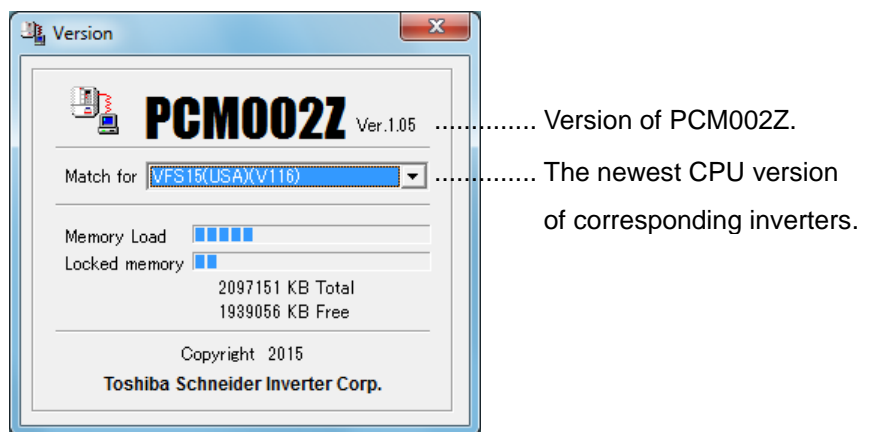


Figure 3-49 About PCM002Z screen

4. Standard specification

| Items | Contents | Page |
|--------------------------|---|------------------|
| Support language*1 | Japanese English | |
| Input file | PCM002Z/ PCM001Z parameter data (*.pcm) PCS001Z parameter data (*.pcs) PCM001Z/PCS001Z parameter data (*.dat) PWU003Z parameter data (*.cfg) *4 PCM002Z/ PCM001Z monitor data (*.mon) | 15 |
| Output file | PCM002Z parameter data (*.pcm) PCM002Z parameter table data (*.csv) PWU003Z parameter data (*.cfg) *4 PCM002Z monitor data (*.mon) PCM002Z monitor data (*.csv) PCM002Z monitor image (*.bmp, *.jpg, *.wmf) | 17 37 |
| Print function | Parameter table output Paper size / orientation, top, bottom, right and left margin setting Print item selection, Comment simultaneous print Preview | 20 |
| Communication setting | Protocol: TOSHIBA / MODBUS-RTU Communication port: COM1-15 Baud rate: 1200 / 2400 / 4800 / 9600 / 19200 / 38400bps Parity: None / Even number/ Odd number Broadcast, Inverter number support | 21 |
| Parameter communications | Parameter Import: User and maintenance parameter*1 Parameter Export: User and maintenance parameter*1 Parameter Comparison: User and maintenance parameter*1 | 25 |
| Parameter table | User and maintenance parameter display*2 Undo / Redo Hexadecimal code / Decimal code display Import / Export/Comparison Factory default display Display changed parameters only Display specified parameters only Copy in a clipboard by the Microsoft® Excel® form Communication number/function name find | 23 |
| Key Pad function | UP / DOWN / MON / ENT / RUN / STOP key support 4-digit 7-segment LED display RUN / MON / PRG / VEC / ECN lamp display, Key lamp display Operation frequency command value input setting function | 36 |

| Items | Contents | Page |
|---------------------|---|------|
| Monitoring function | The number of monitors: Maximum 10 Time axis adjusting range: 0.5 – 30 s / div* ³ Sampling rate: 100 – 5000 ms Number of sampling: 1250 - 10000 Display magnification, Offset adjustment (Real time) Automatic scroll function Automatic roll back at completion function Trigger function, pre-trigger function Long-time recording (24 hours max.) function Monitoring value unit change (A/V) function Zoom function, Data display function Inverter alarm/trip display function All monitor item value display on trip function Print function Graph color, back color setting function Inverter information display function | 37 |
| Others | Tool bar, On-line help, Version information, Parameter help | |

*1 Switched by *Environment Options* option.

*2 Maintenance parameter display is executed only in the maintenance mode.

*3 Differs from the number of channels to be read.

*4 Only the inverter that PWU003Z corresponds.

5. Using example

An example using PCM002Z is introduced.

5.1. Parameter back-up operation

It is recommendable that the parameter setting of the inverter currently used be saved for regular maintenance and failures.

[Procedure]

- (1) Start PCM002Z and select the inverter used.
- (2) From *Tools | Environment Options*, clear a check from the “**Export ‘Change’ Parameters only**” and make “**Use Maintenance Mode**” to be checked.
- (3) Select *Parameter | Parameter Import*, and import the setting value specified in the inverter into the computer. “**Communication error**” may be displayed while reading from the inverter. Press the [OK] button and continue import.
* If errors occur frequently, other causes can be considered. Refer to Troubleshooting of *Help*.
- (4) Select *File | Save As*, and save the parameters import in the computer.

The parameter setting of the inverter will be saved with the above.

5.2. Inverter / Control board replacement operation

When an inverter or a control board is replaced, follow the procedure below, and write the parameter previously saved to the inverter. It is necessary to initialize a inverter format following the procedure (5) after writing.

[Procedure]

- (1) Select the inverter connected.
- (2) From *Tools | Environment Options*, clear a check from “**Export ‘Change’ Parameters only**” and make “**Export to EEPROM**” and “**Use Maintenance Mode**” to be checked.
- (3) Select *File | Open* and specify any file.
 - * The open file can be checked in the parameter table.
- (4) Select *Parameter | Parameter Export*, and export setting value from the computer to the inverter.
 - “**Communication error**” may be displayed while writing. Press the [OK] button and continue export.
 - * If errors occur frequently, other causes can be considered. Refer to Troubleshooting of *Help*.



Caution

If parameters are written in the different drive from the drive selected at PCM002Z startup, there is possibility of incidents which may cause damage to inverters or motors.

- (5) From the parameter table, enter “6” in “**Set Val.**” for the parameter “**Standard setting mode selection (L Y P)**”, then press the Enter key. Next, press the F2 key, then the inverter is automatically initialized.
 - * After the initialization, the parameters written are valid. Communications cannot be accepted while the inverter is being initialized.

Parameter setting for the inverter is complete with the above after a inverter unit or a control board has been replaced.